

For Sublease: Industrial

142 Cawthra Avenue

3,268 SF Industrial Unit Available in the Junction



Lennard:

200-55 University Avenue, Toronto
416.649.5920

lennard.com

142 Cawthra Avenue

3,268 SF of industrial space available for sublease located near Keele Street & St Clair Avenue W.



Available Space

Unit 100: 3,268 SF



Zoning

E 1.0

Employment Industrial



Availability

June 1, 2024

Term Expiry

September 29, 2026



Semi-Gross Rent

Contact Listing Agents



Listing Agents

Dillon Stanway**

Associate Vice President

416.649.5904

dstanway@lennard.com

*Sales Representative **Broker

William J. Dempsey**

Partner

416.649.5940

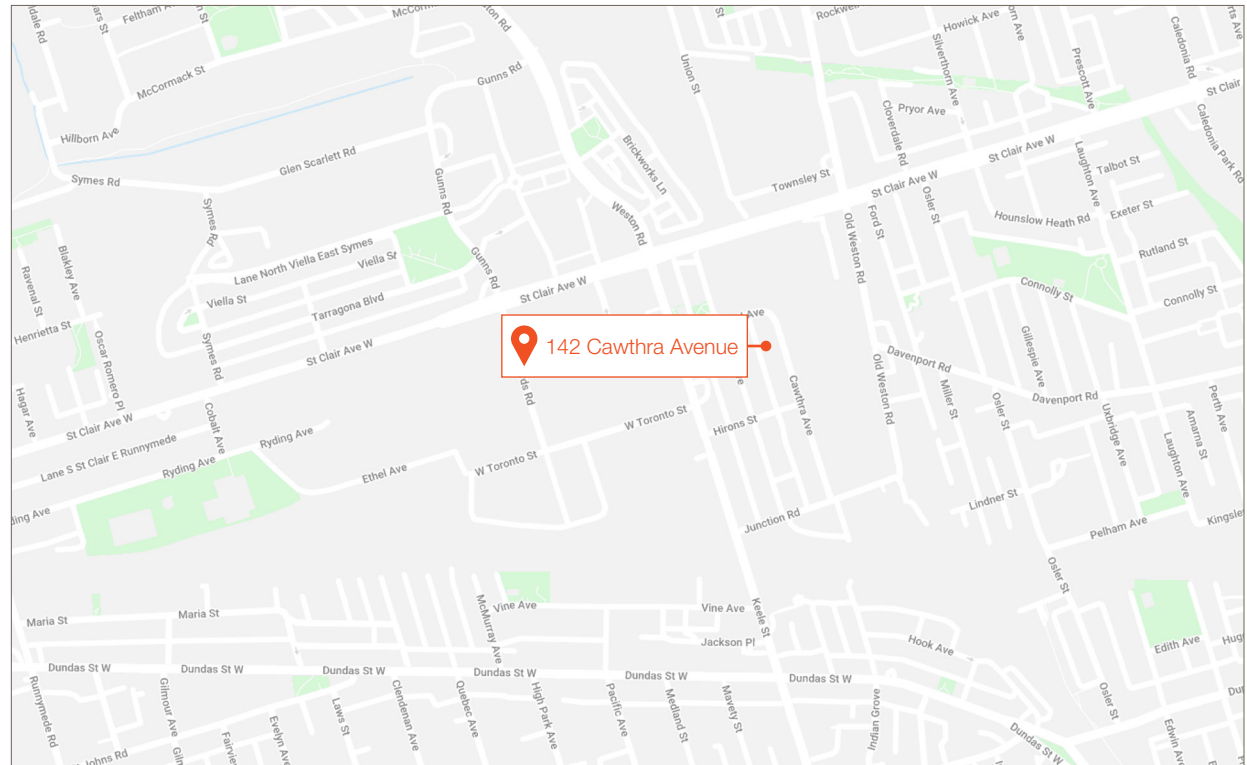
wdempesy@lennard.com

Chris Marit*

Vice President

416.649.5941

cmarit@lennard.com



Property Highlights

- Flexible Short Term Sublease Opportunity
- Many Uses Permitted
- Well located space in the Junction

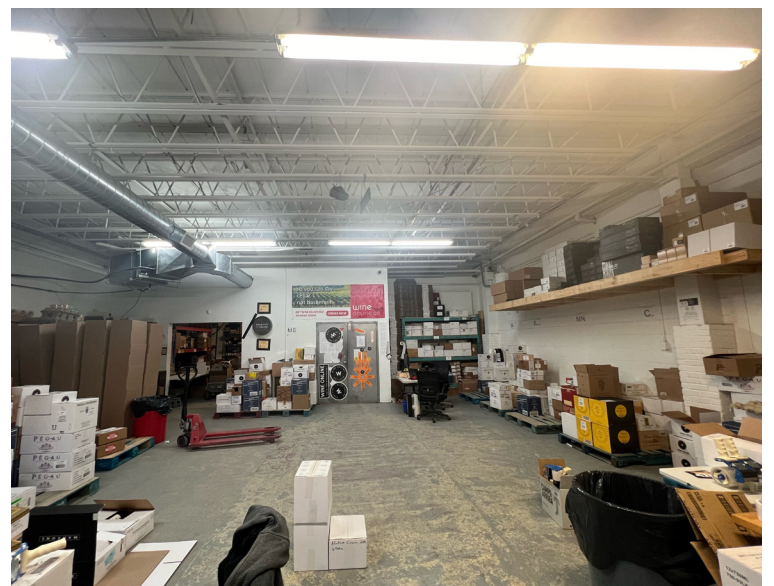
142 Cawthra Avenue



Amenities Map



142 Cawthra Avenue





Lennard:

Dillon Stanway**, Associate Vice President
416.649.5904 | dstanway@lennard.com

William J. Dempsey**, Partner
416.649.5940 | wdempesy@lennard.com

Chris Marit*, Vice President
416.649.5941 | cmarit@lennard.com

200-55 University Avenue, Toronto
416.649.5920
lennard.com

*Sales Representative **Broker

Statements and information contained are based on the information furnished by principals and sources which we deem reliable but for which we can assume no responsibility. Lennard Commercial Realty, Brokerage.