

Free Rent
Negotiable



For Lease: Office

[Click Here](#) for
a Virtual Tour
of Suite 201

20 Duncan Street

Spectacular Brick & Beam Office Space Close to the **PATH!**

Lennard: 200-55 University Avenue, Toronto
416.649.5920

lennard.com

20 Duncan Street

5,495 SF of office space available for lease at the Southwest corner of Adelaide Street W and Duncan Street.



Suite

201

Available Space

5,495 SF



Availability

Immediately



Net Rent

Negotiable

Additional Rent

\$21.65 (2024 Est.)

(Includes in suite hydro; janitorial extra)



Virtual Tour

[Click Here to View](#)

Property Highlights

- High-end brick & beam, in move-in condition
- Windows on three (3) sides (sawtooth)
- Elevator exposure
- 7 window offices, 7 internal “flex” offices, large open desk work areas, boardroom (15 chairs approx.), meeting room on glass, internal shower and wc, amazing employee lounge/kitchen town hall, very functional layout!!
- Steps to Metro Hall PATH!!



Listing Agents

Noah Freeman

Sales Representative

416.649.5946

nfreeman@lennard.com

Paul Cheevers*

Senior Vice President

416.649.5949

pcheevers@lennard.com

*Broker

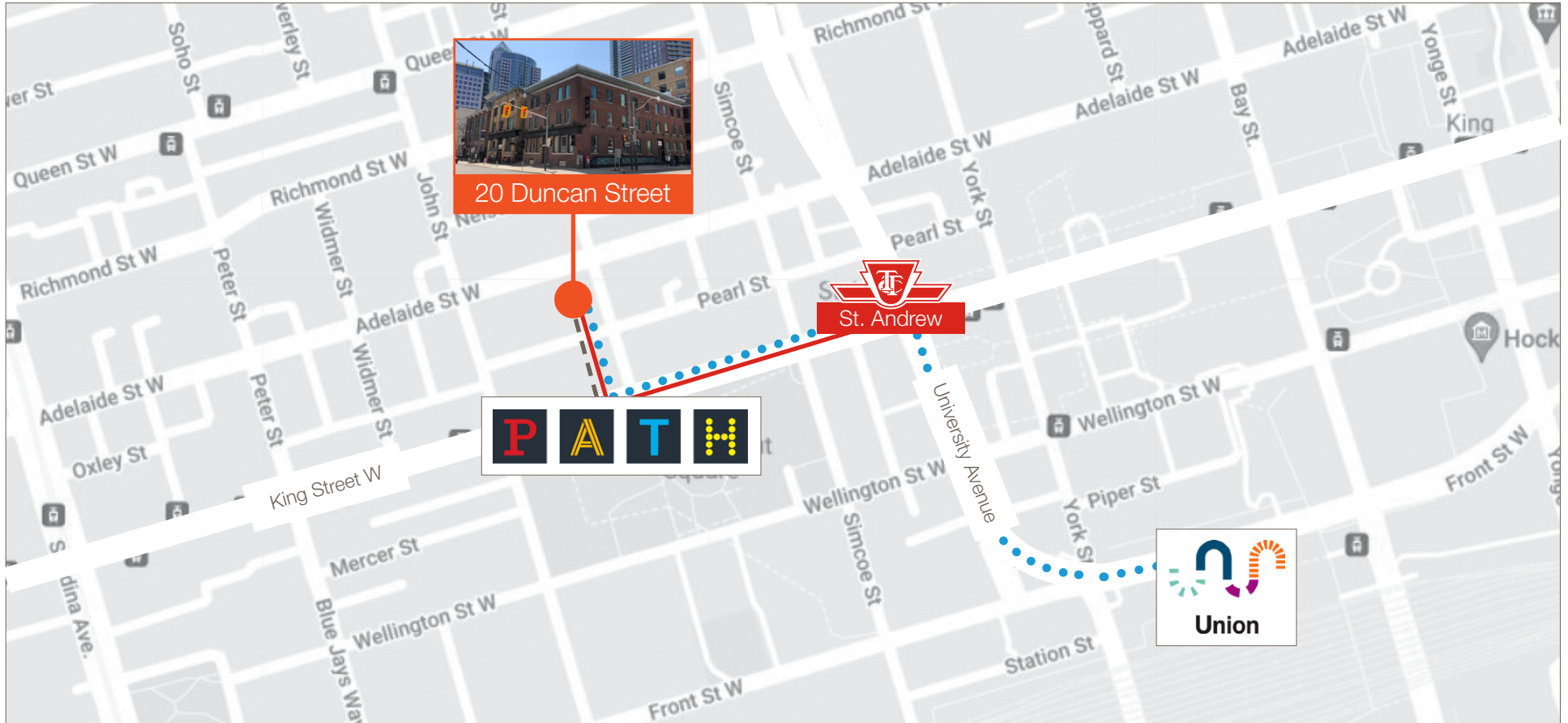
Awesome Leaseholds!




Free Rent Negotiable!

Lennard:

lennard.com

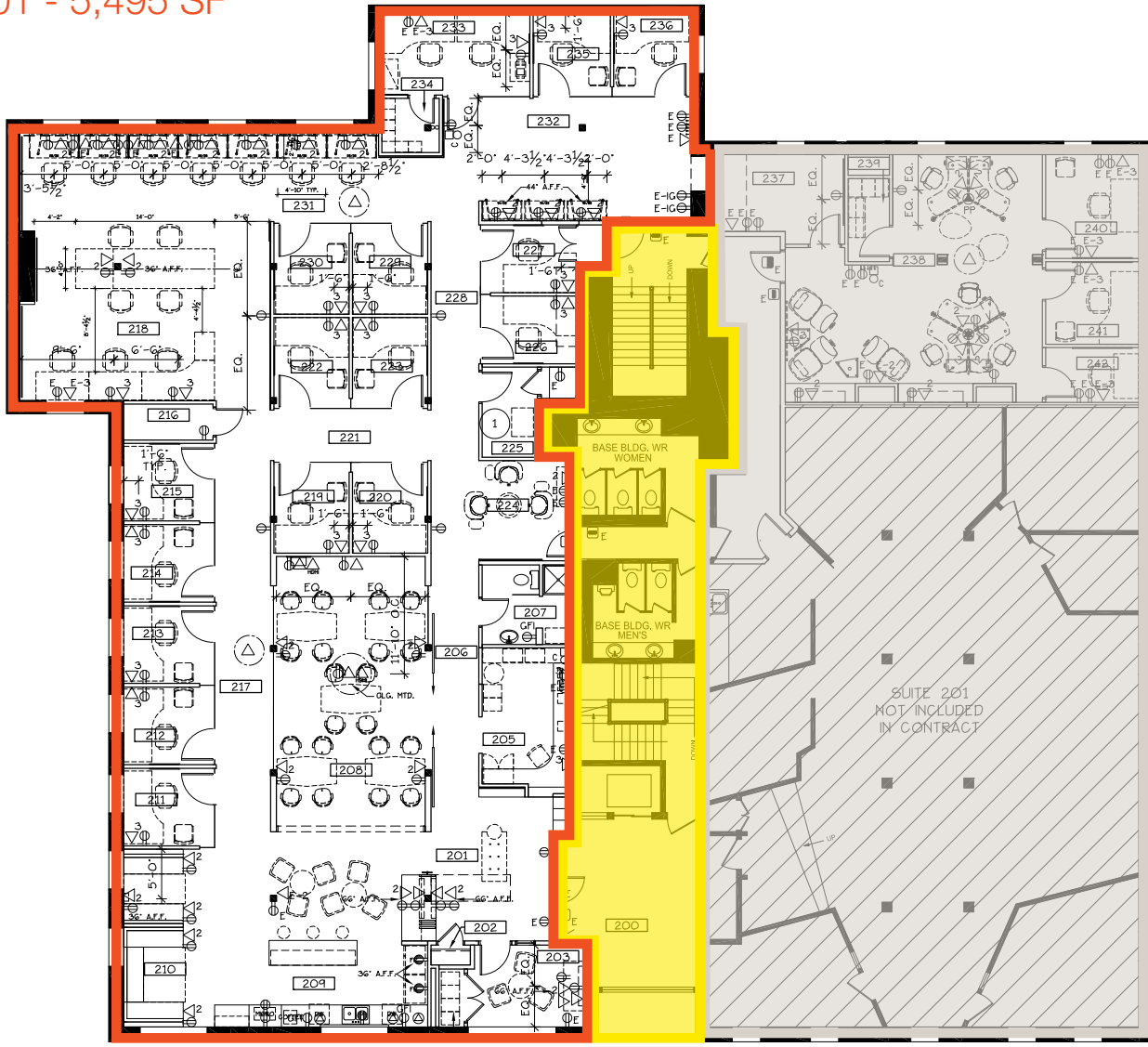
20 Duncan Street



 2 Minute walk to the PATH - - - - -
5 Minute walk to the Subway ————
12 Minute walk to Union Station



20 Duncan Street

Floor Plan: Suite 201 - 5,495 SF



- Legend**
- Suite 201
 - Not Included
 - Common Space

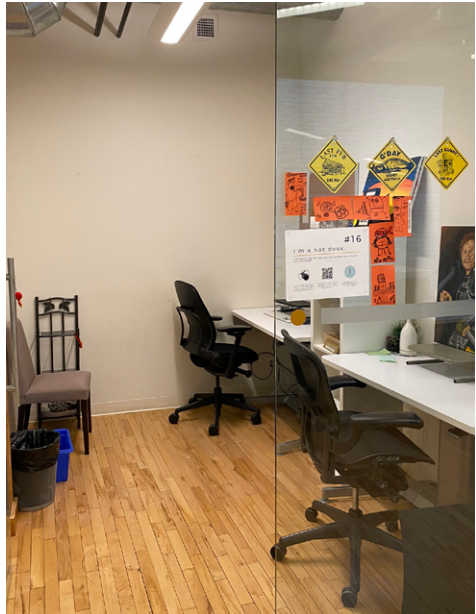
20 Duncan Street

Photos



20 Duncan Street

Photos



Lennard:

Noah Freeman, Sales Representative

416.649.5946

nfreeman@lennard.com

Paul Cheevers*, Senior Vice President

416.649.5949

pcheevers@lennard.com

200-55 University Avenue, Toronto

416.649.5920

lennard.com

*Broker

Statements and information contained are based on the information furnished by principals and sources which we deem reliable but for which we can assume no responsibility. Lennard Commercial Realty, Brokerage.