



For Sublease: Office Space



20 Queen Street W

Office Space for Sublease in Downtown Toronto

Lennard:

200-55 University Avenue, Toronto
416.649.5920

20 Queen Street W

Office space located at the northeast corner of Queen Street W & James Street situated in the heart of the city's bustling financial and entertainment district.



Suite

2301A

Square Footage

10,790 SF



Net Rent

Contact Listing Agents

Additional Rent (2023 est.)

\$24.80 PSF



Available

Immediate

Sublease Expiry

October 30th, 2029



Virtual Tour

[Click here for
Virtual Tour](#)



Leasing Agents

Dillon Stanway

AVP, Broker

416.649.5904

dstanway@lennard.com

William J. Dempsey

Partner, Broker

416.649.5940

wdempsey@lennard.com

Chris Marit

VP, Sales Representative

416.649.5941

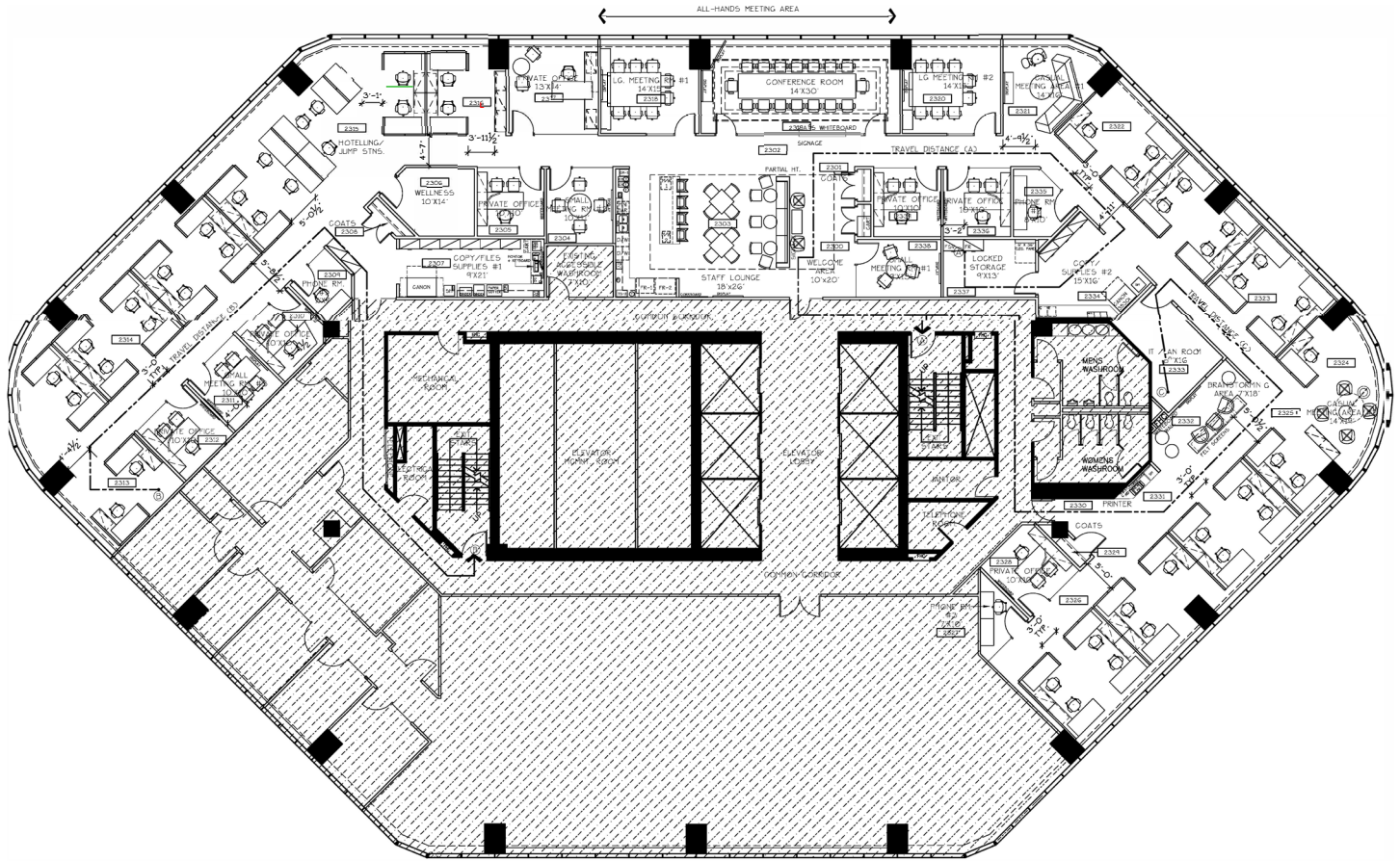
cmarit@lennard.com

Property Highlights

- Close to many landmarks such as Nathan Phillips Square, Old City Hall, and Toronto Eaton Centre
- Home to some of the best shopping destinations such as Toronto Eaton Centre
- There is no shortage of dining options in walking proximity
- Access to multiple public transit options
- Direct access to Queen Subway Station

20 Queen Street W

Suite 2301A: 10,790 SF

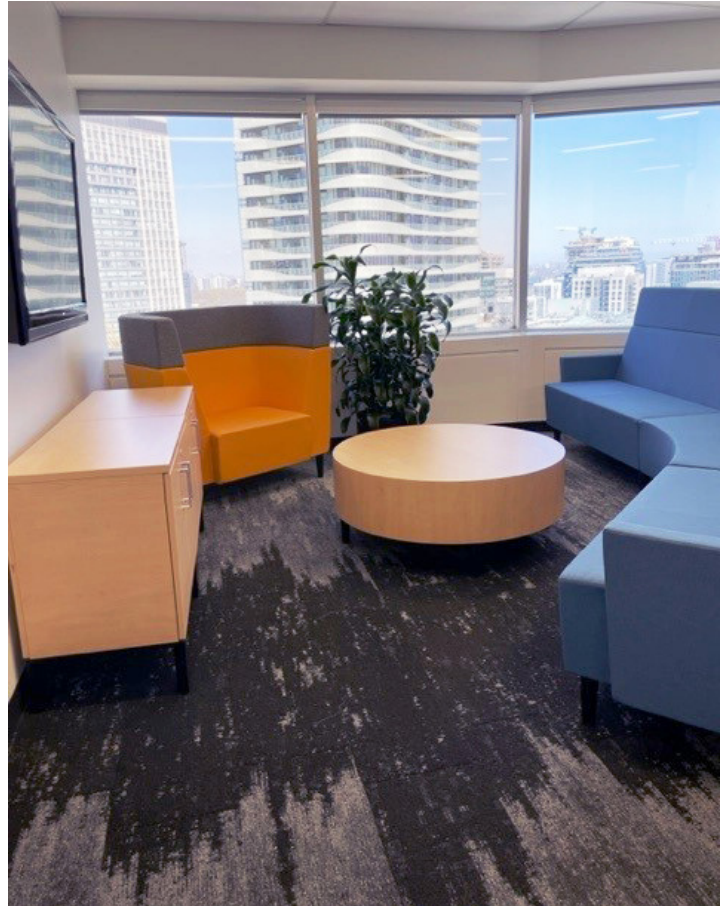


20 Queen Street W



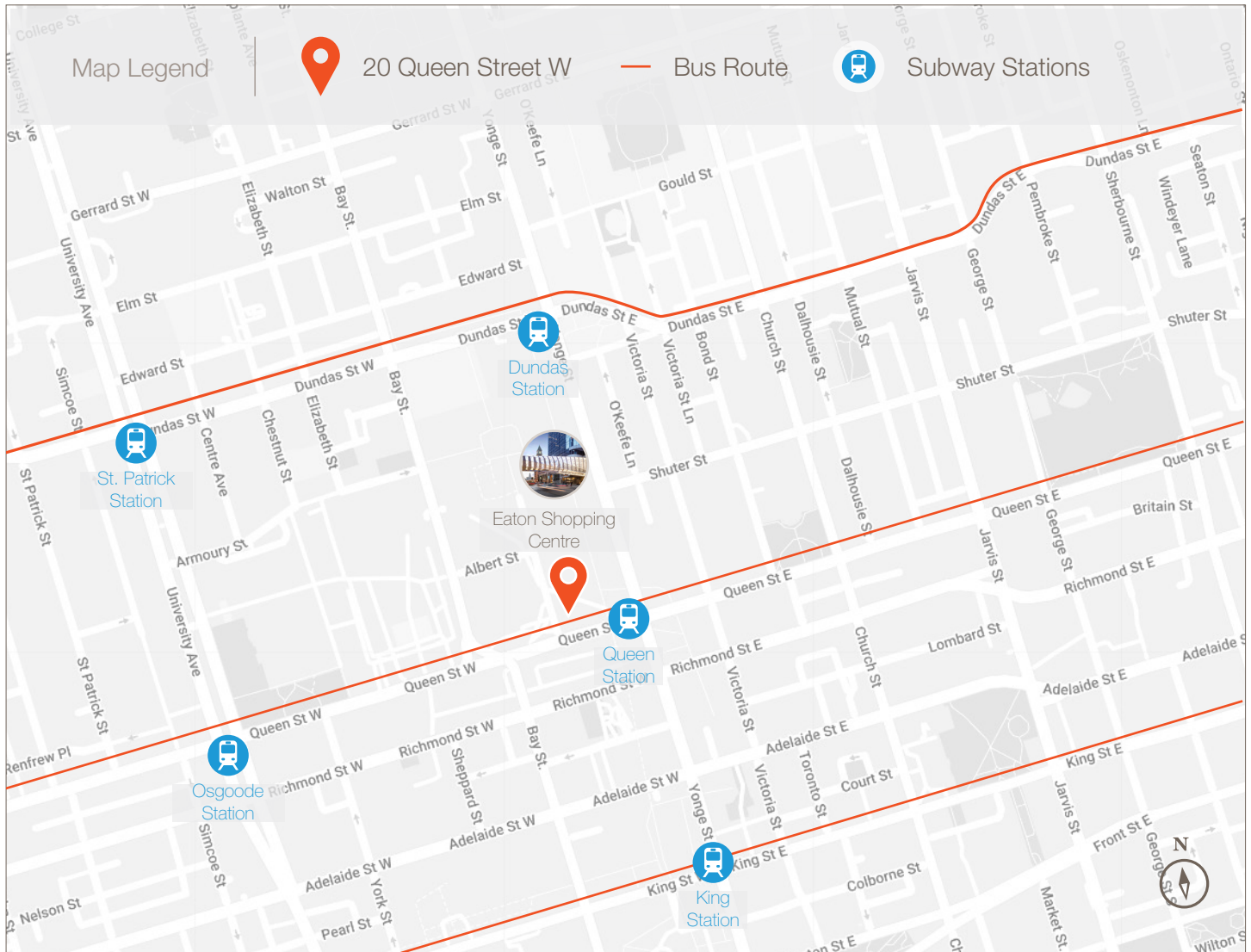
Statements and information contained are based on the information furnished by principals and sources which we deem reliable but for which we can assume no responsibility. Lennard Commercial Realty, Brokerage 2023.

20 Queen Street W



Statements and information contained are based on the information furnished by principals and sources which we deem reliable but for which we can assume no responsibility. Lennard Commercial Realty, Brokerage 2023.

20 Queen Street W



What's Near By

20 Queen Street W is located in the Financial District of Toronto, which is a bustling and vibrant neighborhood with many high-rise buildings, offices, and financial institutions. The streets are lined with modern skyscrapers, and the area is always buzzing with activity during business hours.

There are many restaurants, cafes, and shops around the area, catering to the needs of the office workers and visitors. The Toronto Eaton Centre, a large shopping mall, is located nearby, as well as the PATH, a vast underground network of shops, restaurants, and services.

20 Queen Street W is served by several streetcar lines that run along Queen Street, including the 501 Queen and is 3 minute walk away from Queen Subway Station Streetcar.

Statements and information contained are based on the information furnished by principals and sources which we deem reliable but for which we can assume no responsibility. Lennard Commercial Realty, Brokerage 2023.