



26 Dorchester Avenue

Outstanding 12,184 SF Industrial Building

Lennard:

26 Dorchester Avenue

12,184 SF Freestanding Building Near Islington & Queensway, Just West of Islington



Total Area

12,184 SF

Office to Industrial Ratio

35% Office | 65% Industrial



Price

\$7,200,000

Taxes

\$31,258.74 (Annually)



Zoning

IC-1 (Industrial)



Clear Height

12'6"



Availability

TBD



Listing Agents

Alastair Strachan*

Senior Vice President

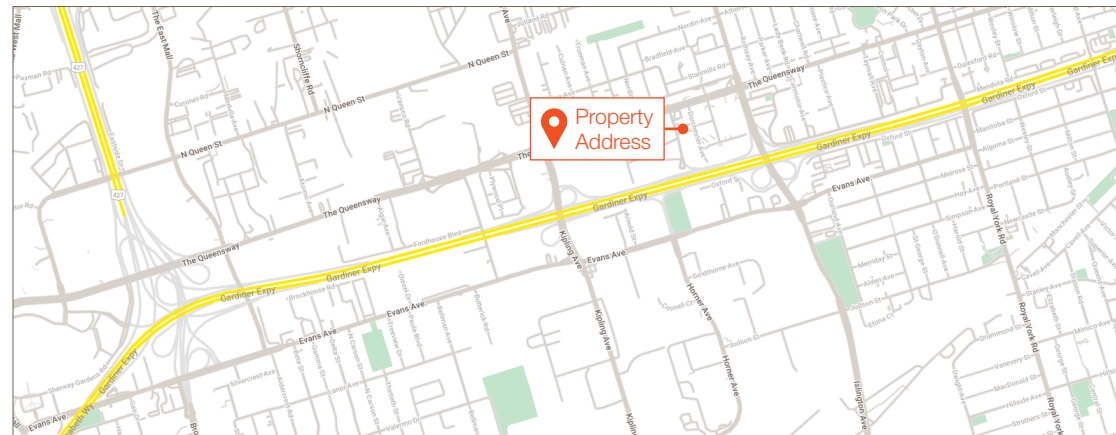
416.346.9500

astrachan@lennard.com

*Sales Representative

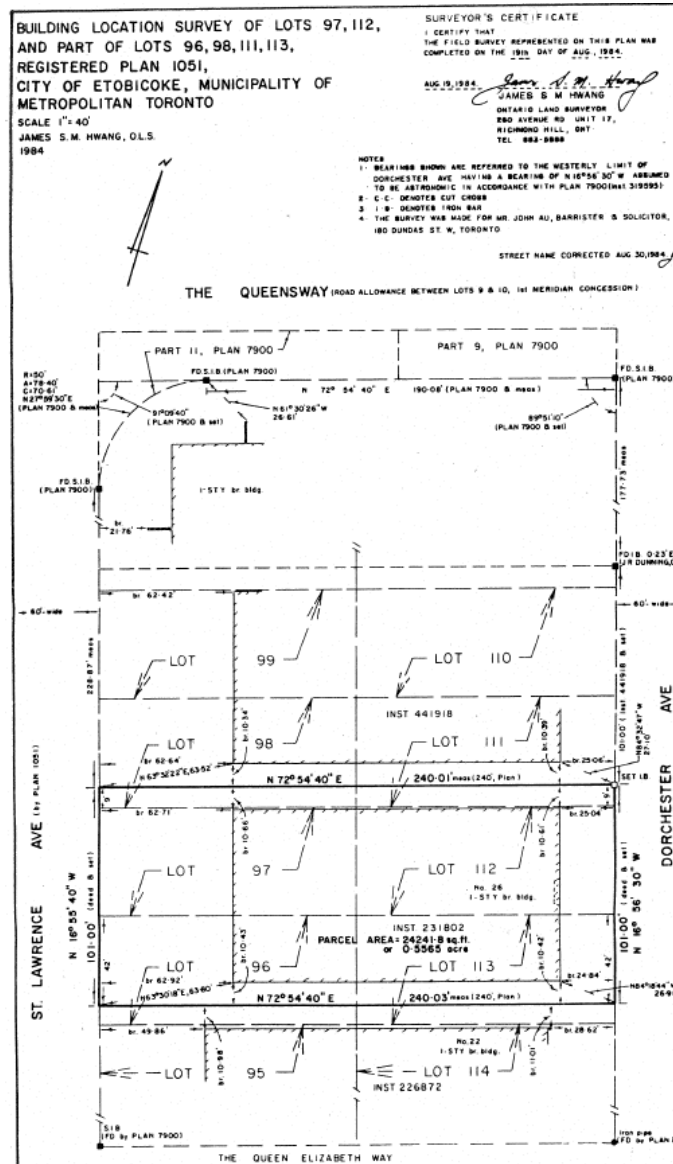
Property Highlights

- A/C Offices
- Three Dock Level Doors (Drive in is possible)
- Room for 53' Trailers
- Paved Parking Lot
- Highrise Residential Development to the East, North and West – **strong potential for future Residential Development**



26 Dorchester Avenue

Property Survey



Lennard:

Alastair Strachan*, Senior Vice President

416.346.9500

astrachan@lennard.com

602-350 Burnhamthorpe Road W, Mississauga

905.625.5020

lennard.com

*Sales Representative

Statements and information contained are based on the information furnished by principals and sources which we deem reliable but for which we can assume no responsibility. Lennard Commercial Realty, Brokerage.