



For Lease

3210 Swansea Crescent

Lennard: Imagine the *Possibilities*.



3210 Swansea Crescent




 Available Space
3,100 SF

 Net Rent
\$16.50 PSF
Additional Rent
\$7.75 PSF (2024 Estimate)

 Availability
Immediate

 Zoning
IH

 Shipping
1 Garage Door

 Clear Height
14'



Listing Agent
Ian Shackell*
Partner

D. 613.963.2633
C. 613.761.0177
ishackell@lennard.com

Matt Shackell*
Vice President
D. 613.963.2636
C. 613.612.8812
mshackell@lennard.com

Lavel Tiwana
Sales Representative
D. 613.963.2635
C. 613.416.4666
ltiwana@lennard.com

*Sales Representative

Property Highlights

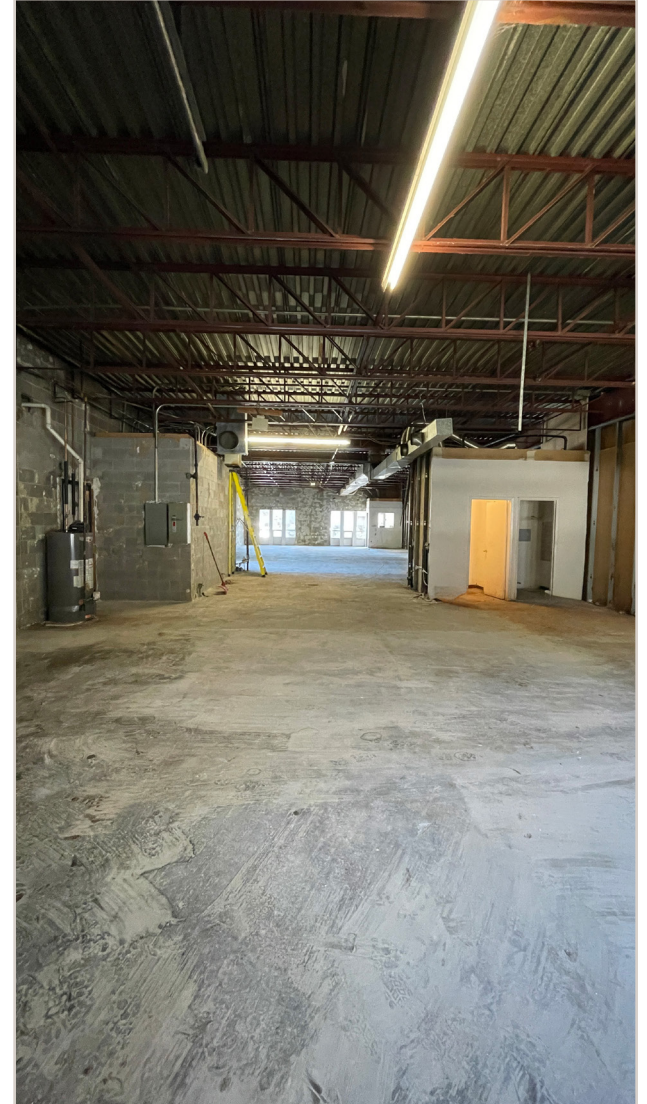
- Located within the Hunt Club and Walkley submarket, an established industrial neighbourhood within Ottawa's east end.
- The property is a multi-tenant industrial and commercial building.
- Close proximity to Highway 417 and other important local arterials.
- Currently restaurant use, but landlord willing to convert to industrial showroom, workshop space
- Has concrete pad adjacent to unit for outside storage or more parking

Lennard:

3210 Swansea Crescent



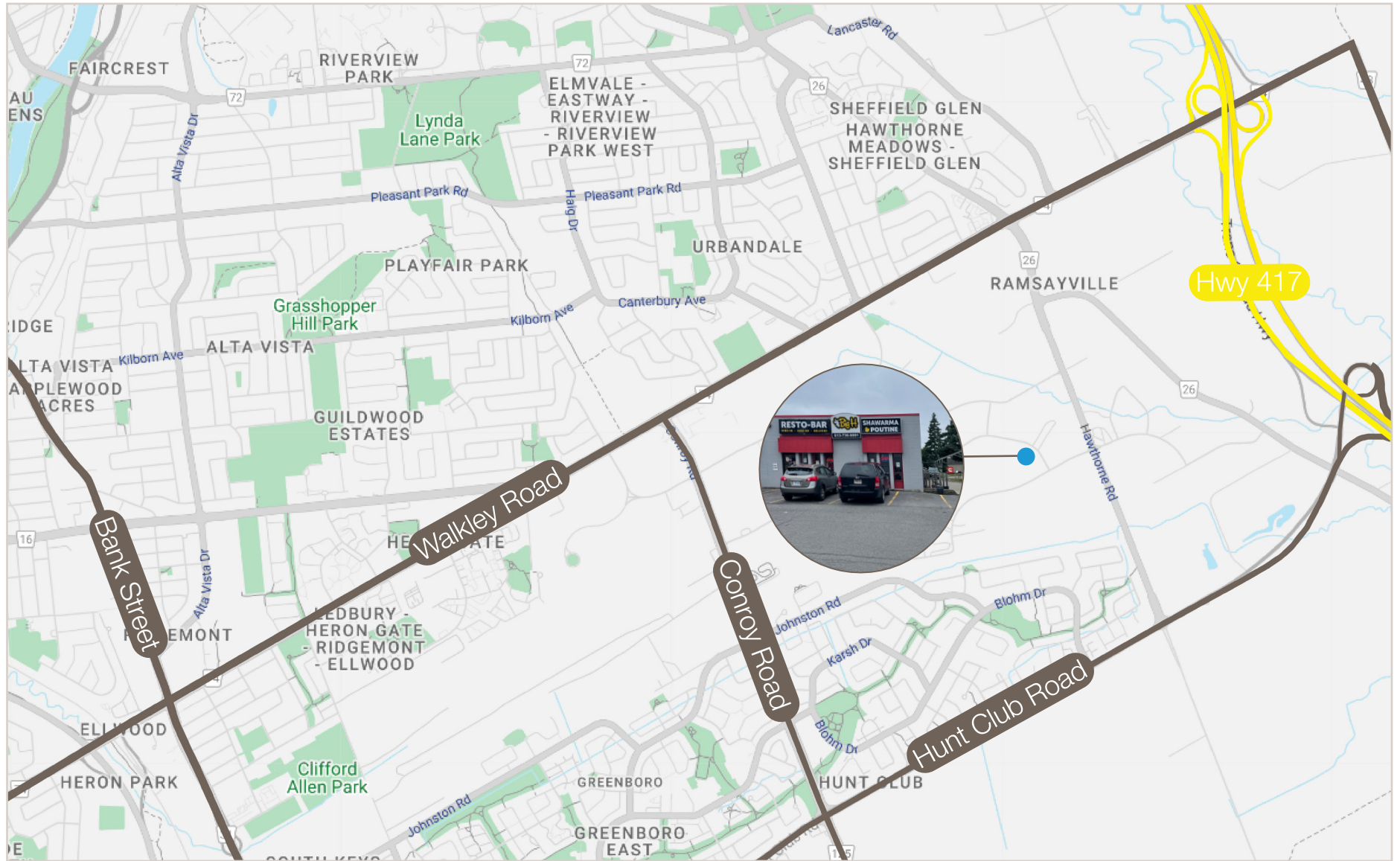
Photos



Lennard:

3210 Swansea Crescent

Location Map



Lennard:



Lennard:

Ian Shackell*, Partner

D. 613.963.2633

C. 613.761.0177

ishackell@lennard.com

Matt Shackell*, Vice President

D. 613.963.2636

C. 613.612.8812

mshackell@lennard.com

Lavel Tiwana, Sales Representative

D. 613.963.2635

C. 613.416.4666

ltiwana@lennard.com

333 Preston Street, Suite 420

Ottawa, ON K1S 5N4

613.963.2640

lennard.com

*Sales Representative

Statements and information contained are based on the information furnished by principals and sources which we deem reliable but for which we can assume no responsibility. Lennard Commercial Realty, Brokerage 2023.