



For Sublease: Retail

# 832 Eglinton Avenue E

10,365 SF of Available Space Across Two Floors

**Lennard:**

602-350 Burnhamthorpe Road W, Mississauga  
905.625.5020

[lennard.com](http://lennard.com)



# 832 Eglinton Ave E



Available Space

Total: 10,365 SF



Zoning

CR2.1 ((C0.7;r1.1)\*298)



Clear Height

18'



Availability

September 2023



Net Rent

\$37.50 PSF

Additional Rent

\$8.34 PSF (2023 Est.)

Highlights

- Building is located directly along new Crosstown LRT
- Adjacent from upcoming Laird Station
- Basement with 1,000 SF of space
- Plenty of parking located behind the property as well as along Eglinton Avenue

Drive times



Don Valley Pkwy

6 minutes



Ontario Science Centre

5 minutes



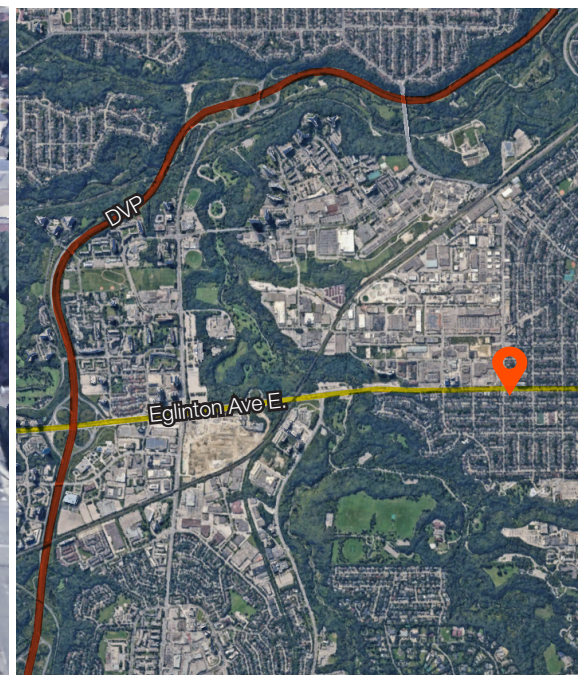
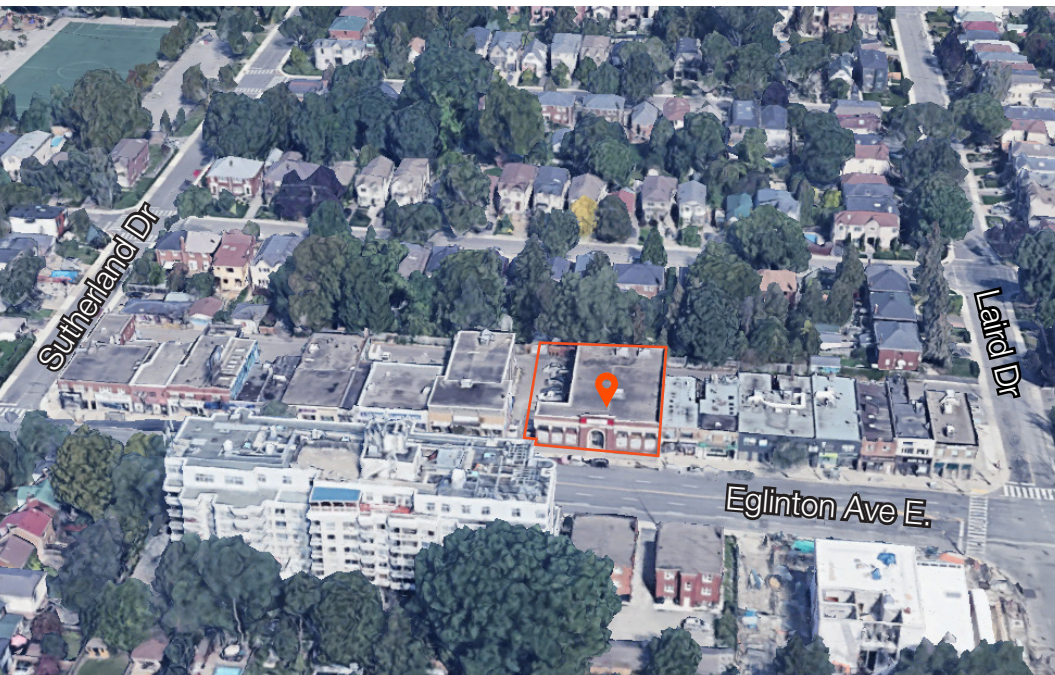
Eglinton Subway Station

8 minutes



Highway 401

10 minutes



**Lennard:** Trevor Ellis\*, Senior Vice President  
905.247.9229 • tellis@lennard.com

Brian Heming\*\*, Sales Representative  
416.915.5685 • bheming@lennard.com

[lennard.com](http://lennard.com)

\*Broker \*\*Sales Representative

# Lennard:

Trevor Ellis\*, Senior Vice President  
905.247.9229  
[tellis@lennard.com](mailto:tellis@lennard.com)

Brian Heming\*\*, Sales Representative  
416.915.5685  
[bheming@lennard.com](mailto:bheming@lennard.com)

602-350 Burnhamthorpe Road W, Mississauga  
905.625.5020  
[lennard.com](http://lennard.com)

\*Broker \*\* Sales Representative

Statements and information contained are based on the information furnished by principals and sources which we deem reliable but for which we can assume no responsibility. Lennard Commercial Realty, Brokerage.