



For
Lease : 1058

Yonge Street

A rare and desirable 3,800 SF of boutique office space in the heart of Rosedale

Lennard:

1058 Yonge Street

Property Details



3rd Floor
2,317 SF
2nd Floor
1,532 SF

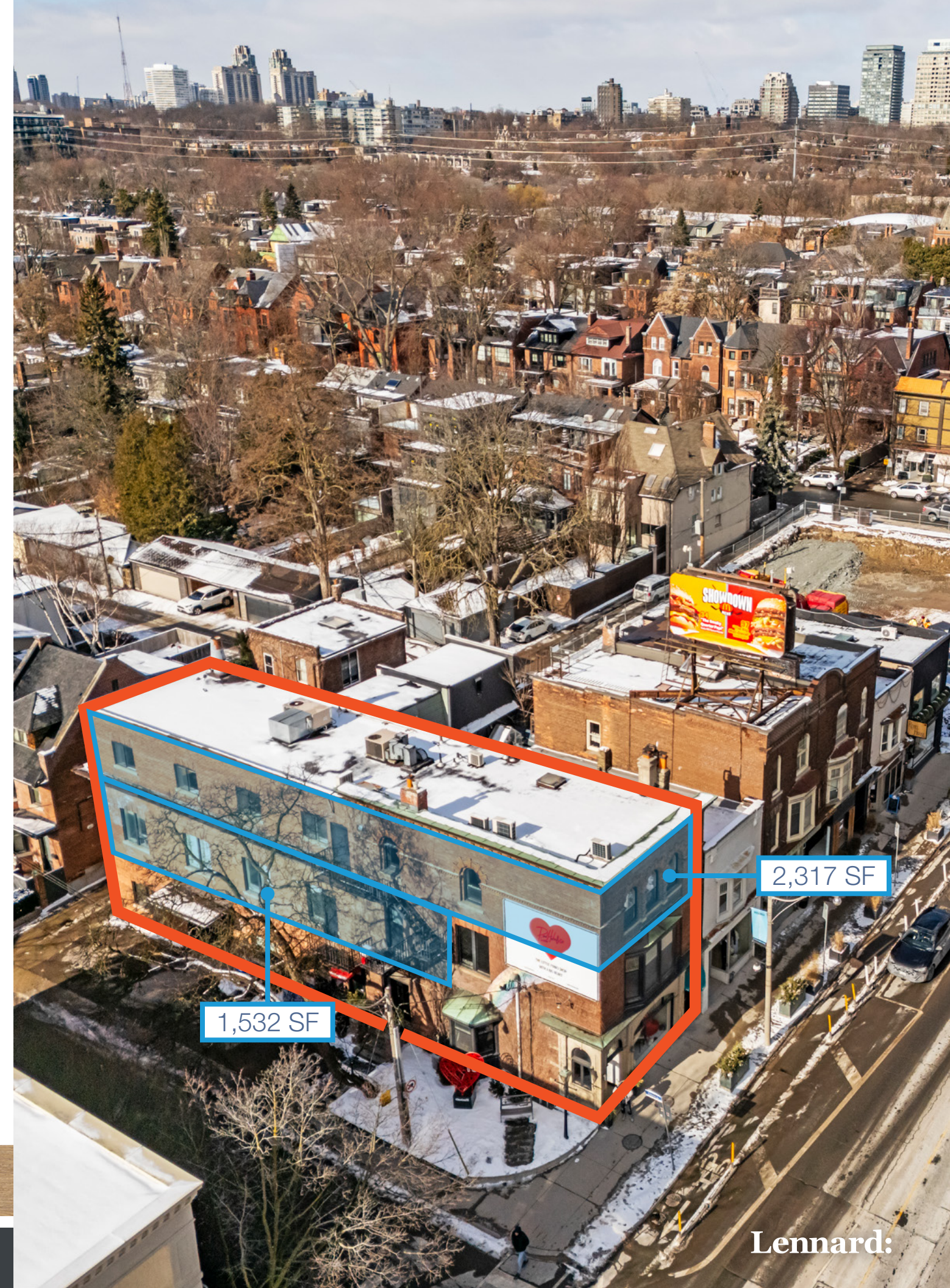
Contiguous
3,849 SF



Net Rent
Contact Listing Agents
Additional Rent
\$14.73 PSF
(Estimate 2025)



Availability
Immediate



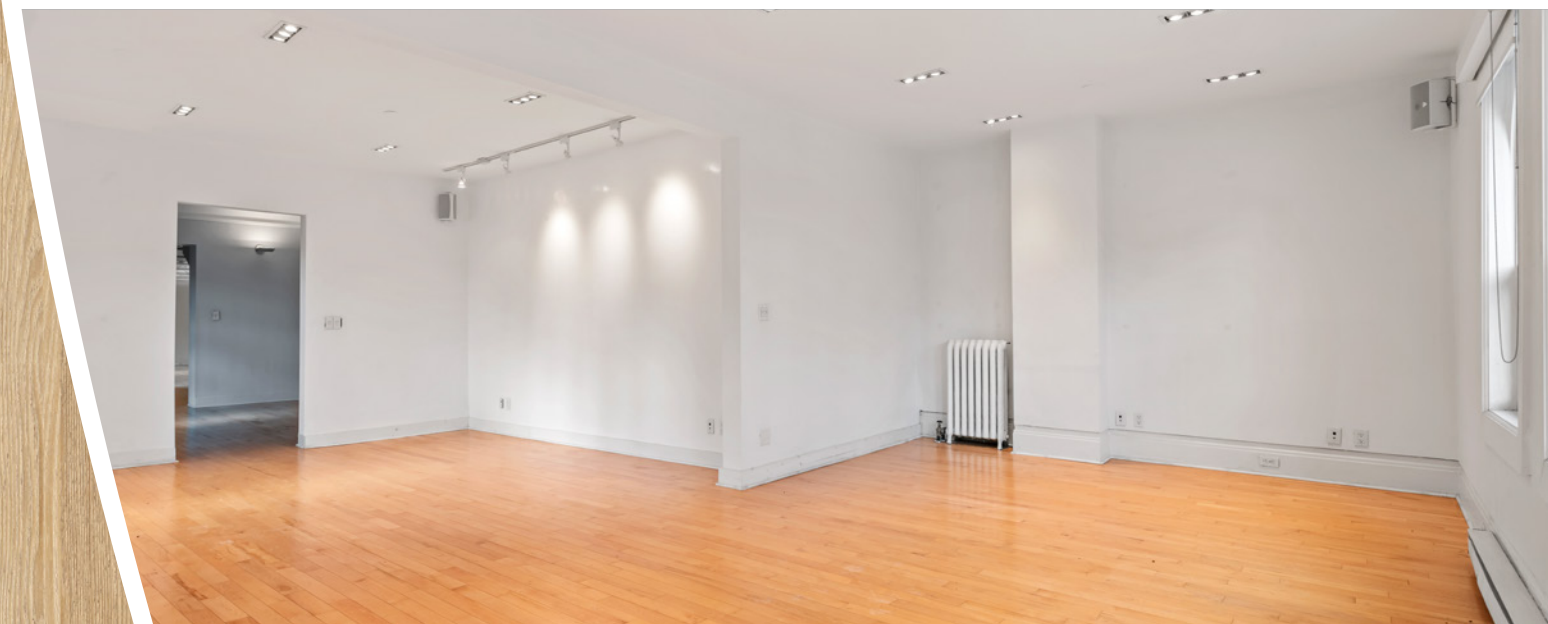
1058 Yonge Street

3rd floor



Property Highlights

- Building located on the northwest corner of Yonge & Gibson Ave
- A rare and desirable 3,800 sq ft of office in the heart of Rosedale
- The building is a south facing corner providing ample natural light with windows on four (4) sides
- First time space has been available in >40 years
- 1 minute to Rosedale Subway Station
- Ample nearby Rosedale and Summerhill amenities



Lennard:

1058 Yonge Street

3rd floor



Lennard:

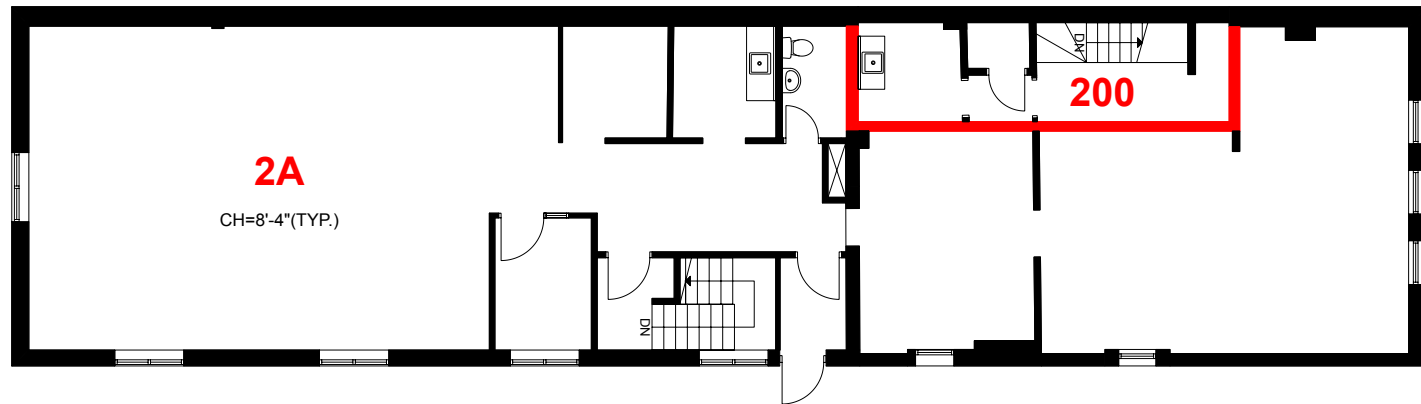
1058 Yonge Street

2nd floor

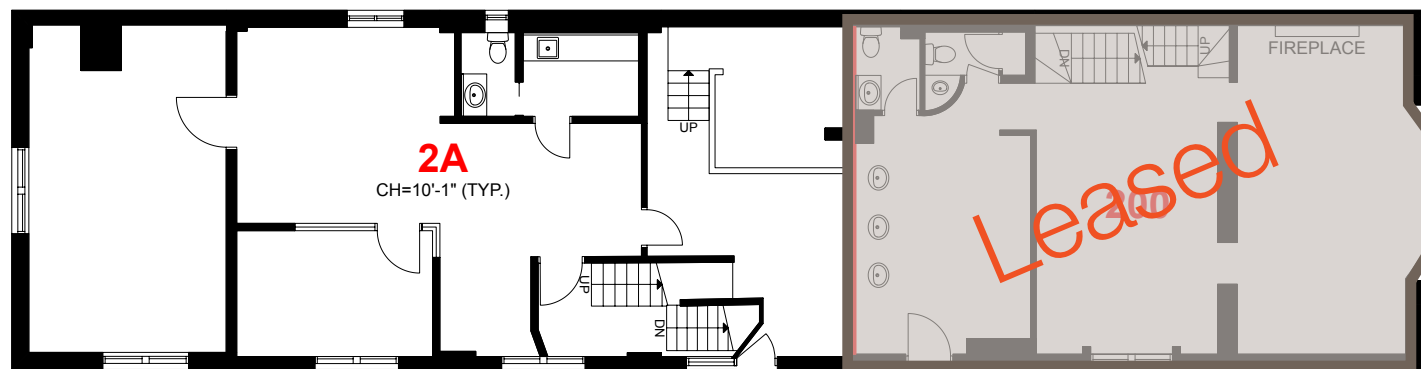


1058 Yonge Street

Floor Plan: 3rd Floor



Floor Plan: 2nd Floor



Building Highlights

- Prime location in one of Toronto's most exclusive neighbourhoods known for its charming luxury appeal, vibrant mix of upscale dining, high end local retail experience
- Charming three-story corner brick building with unparalleled stylish streetscape
- First time space has been available in over forty years
- Nestled in the heart of Rosedale amongst a mix of elegant restaurants, chic cafes, and upscale boutiques
- Nestled a few steps away from bustling Yorkville & Bloor Street



Lennard:

Brad Robinson

Senior Vice President | Broker

416.915.5277

brobinson@lennard.com

200-55 University Avenue, Toronto

416.649.5920

lennard.com

Statements and information contained are based on the information furnished by principals and sources which we deem reliable but for which we can assume no responsibility. Lennard Commercial Realty, Brokerage.

