



For Lease: 1,974 SF of Office Space

1775

Courtwood Cres.

Ottawa, Ontario

Brent Heeney,
Sales Representative
D. 613.963.2631
bheeney@lennard.com

420-333 Preston Street, Ottawa
613.963.2640 • lennard.com

Lennard:

1775 Courtwood Cres.

Located on Courtwood Crescent near Maitland Avenue



Available Space

Unit 202: 1,974 SF



Availability

Spring 2025



Gross Rent

\$27.00 PSF



Parking

Up to 6 surface level parking spaces available

Property Highlights

- 1,974 SF of traditional office space available for lease in Carlington Business Park
- Easily accessible from HWY 417 with plenty of parking available and convenient bus routes nearby
- Convenient amenities nearby include Starbucks, Tim Hortons, Altea Fitness, Boston Pizza and much more.
- Unit contains a functional layout that will suit a wide range of office users

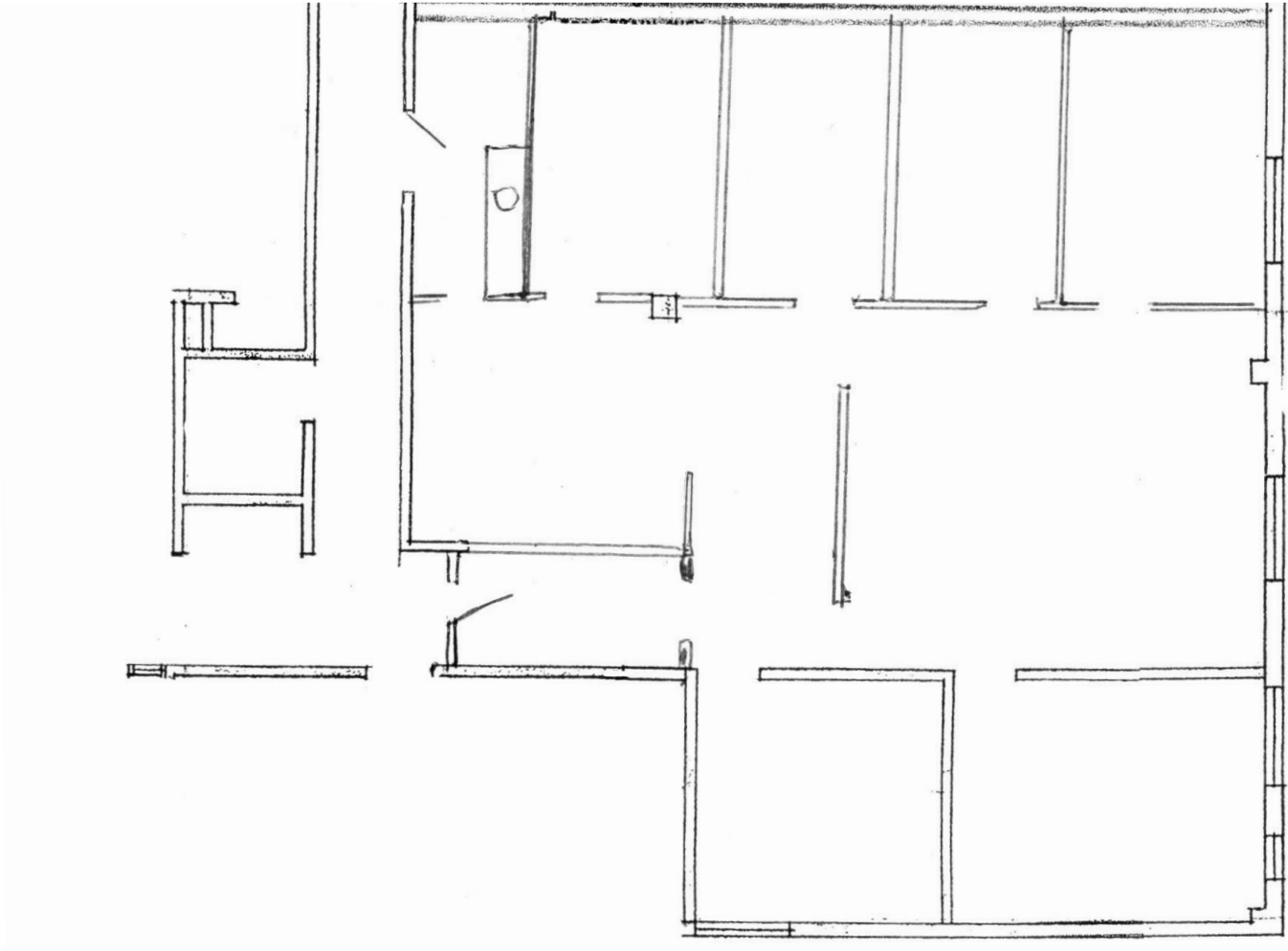


1775 Courtwood Cres.

Building Floor Plan



Unit 202: 1,947SF



1775 Courtwood Cres.

Unit 202



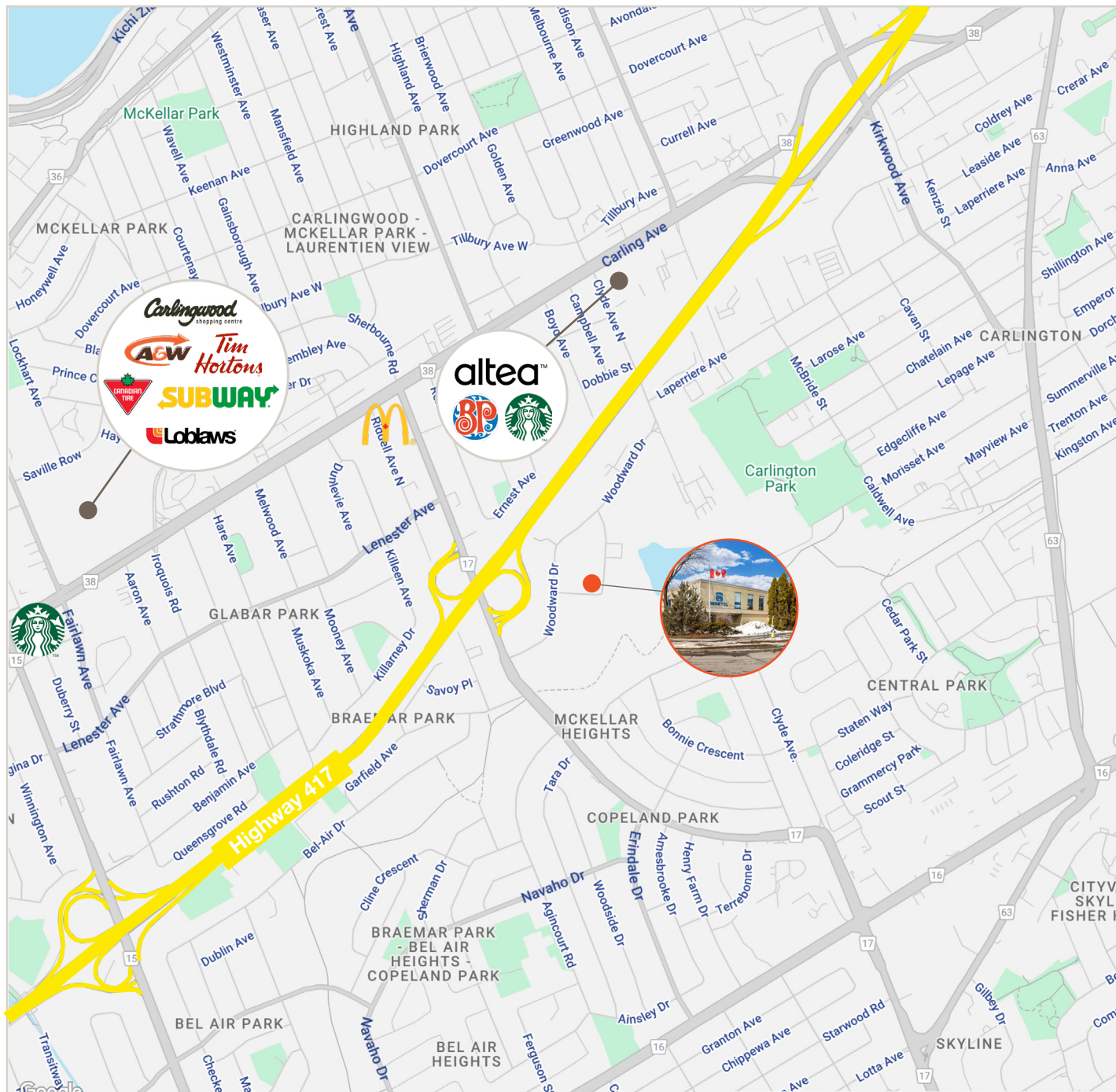
A bright future
for your business
is right here.

Lennard:

Lennard.com

1775 Courtwood Cres.

Location Map



Lennard:

Lennard.com

Lennard:

Brent Heeney,
Sales Representative
D. 613.963.2631
bheeney@lennard.com

333 Preston Street, Suite 420
Ottawa, ON K1S 5N4
613.963.2640
lennard.com

*Sales Representative

Statements and information contained are based on the information furnished by principals and sources which we deem reliable but for which we can assume no responsibility.