

For Lease: Office Space

25 Centurian Drive

Markham, ON



Lennard:

25 Centurian Drive

25 Centurian Drive is an intimate 2 storey office building in the heart of the Allstate Business Park with tons of walkable amenities along Woodbine.



Suite
208

Available Space
6,880 SF



Parking
4.5 per 1,000
free surface



Net Rent
\$16.00 PSF

Additional Rent
\$12.25 PSF



Inducement or Turnkey
Provided as required to
accommodate new tenants



Listing Agents

Ken Karalus*

Senior Vice President

905.489.0711

kkaralus@lennard.com

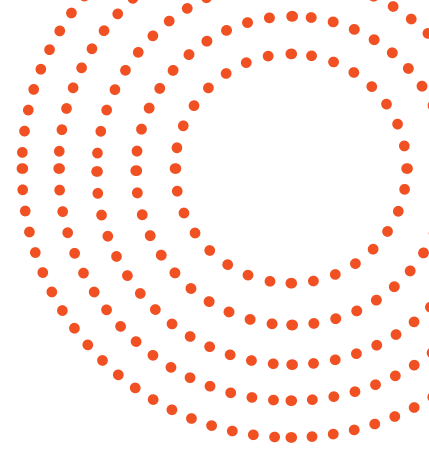
*Sales Representative

Property Highlights

- All vacancies are fully finished & ready for immediate occupancy
- Only 9% building gross up factor!
- Low Additional Rent
- High ratio surface parking
- 24 hour HVAC Available



Floor Plans



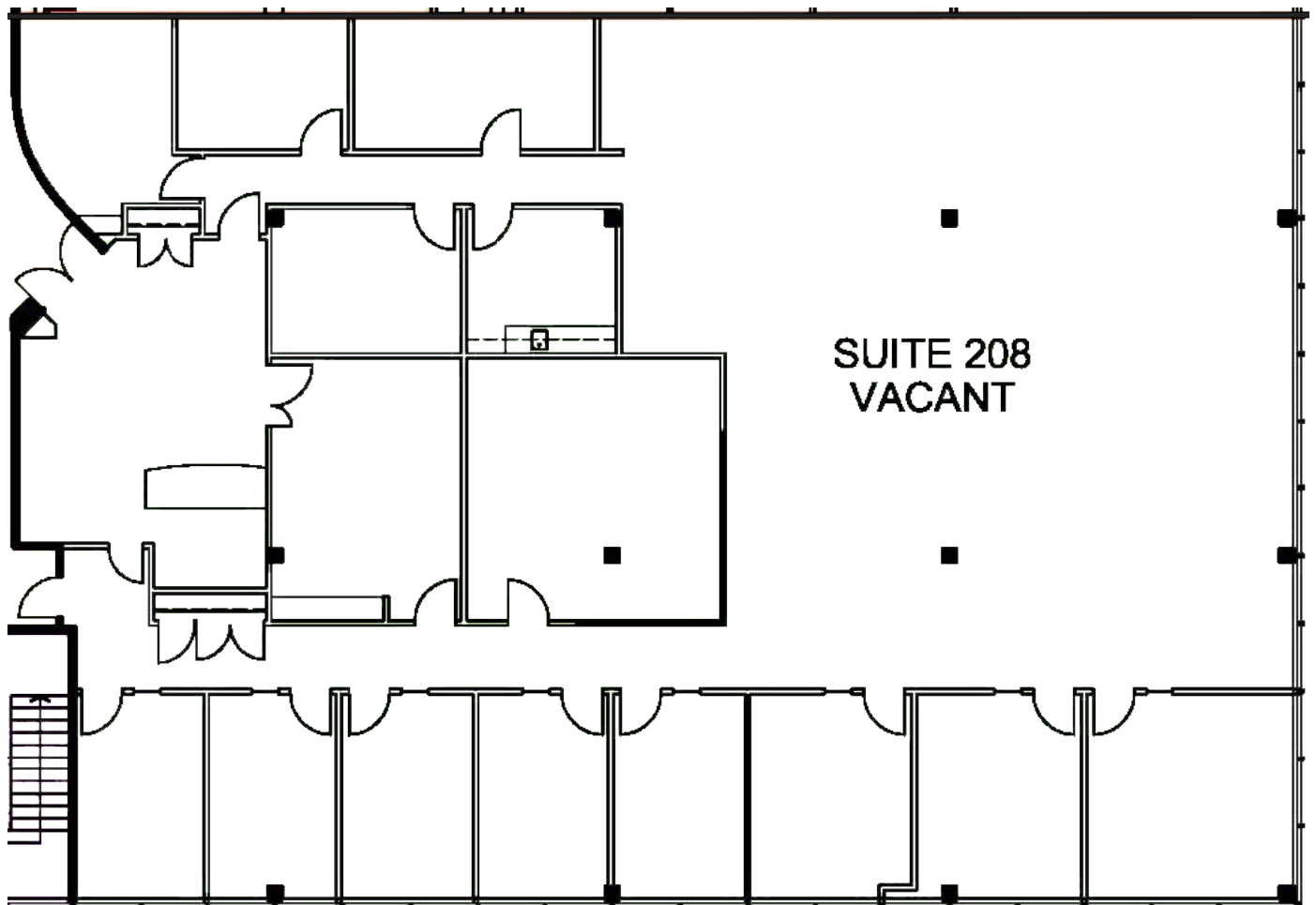
Suite

208

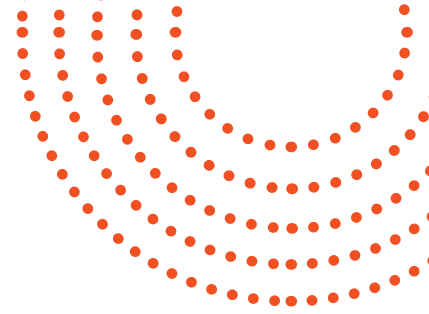
6,880 SF

Unit Highlights

- Corner suite with multiple office/meeting rooms, open, and kitchen area



Amenities Map



Ken Karulas*, Senior Vice President
905.489.0711 • kkarulas@lennard.com

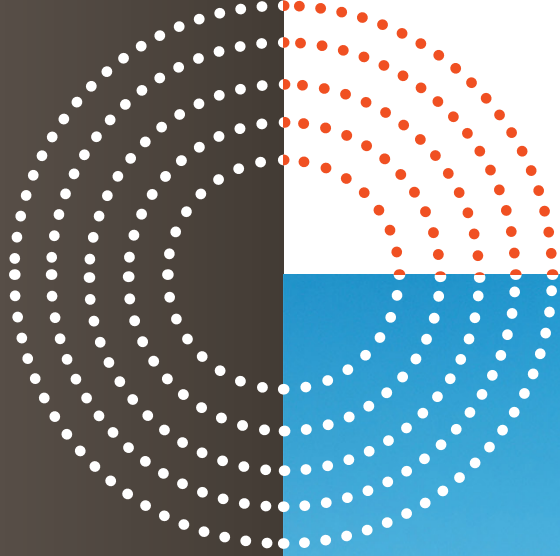
Lennard:

Photos



Ken Karulas*, Senior Vice President
905.489.0711 • kkarulas@lennard.com

Lennard:



Lennard:

Ken Karulas*, Senior Vice President
905.489.0711
kkarulas@lennard.com

201-60 Columbia Way, Markham
905.752.2220
lennard.com

*Sales Representative
Statements and information contained are based on the information furnished by principals and sources which we deem reliable but for which we can assume no responsibility.
Lennard Commercial Realty, Brokerage.

