

Line 8

20th Sideroad

For Sale: Land

# 2881 20th Sideroad

New Tecumseth, Ontario

**Lennard:**

200-55 University Avenue, Toronto  
416.649.5920

[lennard.com](http://lennard.com)



# 2881 20th Sideroad

New Tecumseth, Ontario

## Property Overview



Lot Size

44.46 Acres

Perimeter

6,492.78 Feet (approximately)



Zoning

A-1 Agricultural One &  
EP - Environmental Protection 2 Overlay



Legal Description

PT LT 21 CON 7 TECUMSETH PT 1  
51R20596 EXCEPT PTS 1 & 2 51R37813  
TOWN OF NEW TECUMSETH

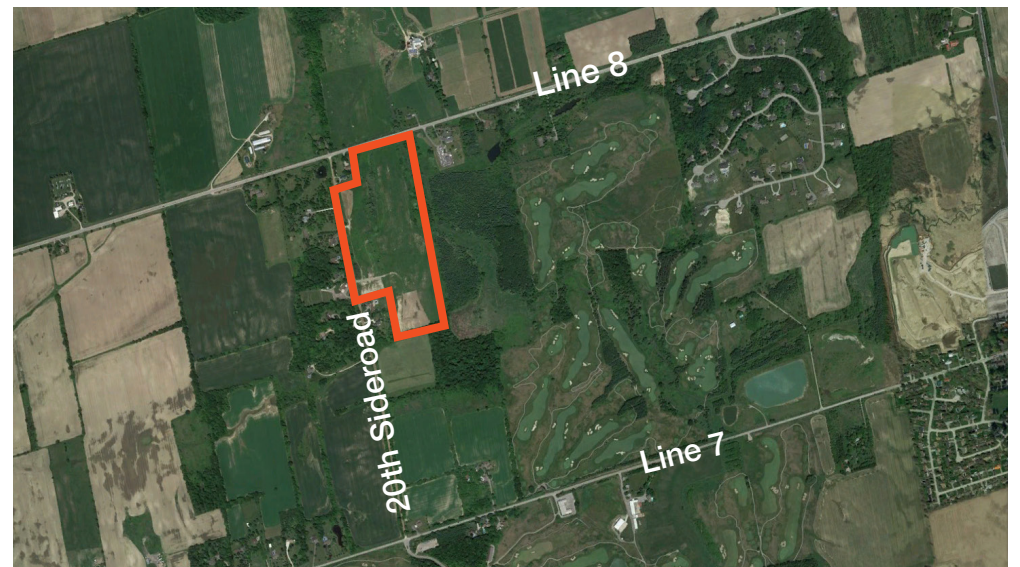
PIN

581590254



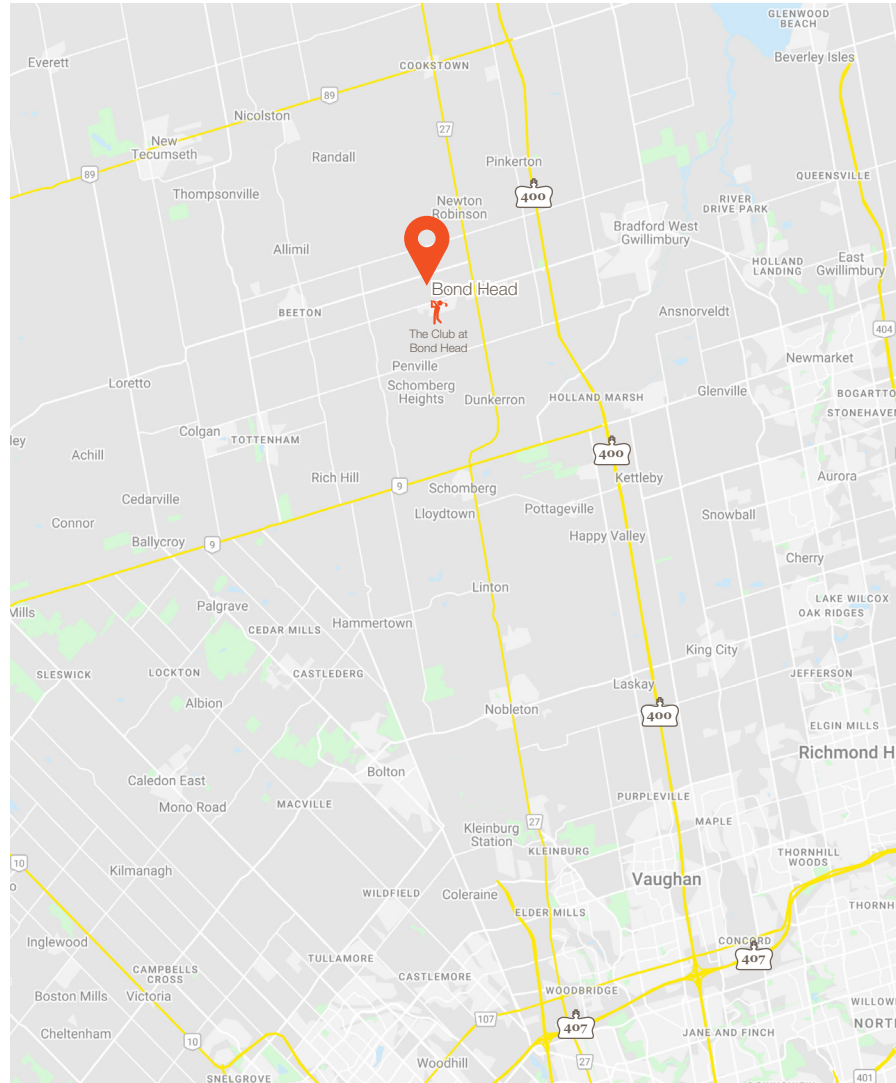
Asking Price

\$2,700,000



# 2881 20th Sideroad

New Tecumseth, Ontario



## Location Map and Area Overview

The Town of New Tecumseth, nestled in the southern part of Simcoe County, offers a dynamic blend of urban vitality and rural charm comprising three bustling urban centers: Alliston, Beeton, and Tottenham.

Strategically situated just an hour north of the Greater Toronto Area and conveniently located minutes away from Highway 400, New Tecumseth boasts easy access to major Ontario markets. This advantageous positioning facilitates seamless connectivity to economic hubs like the Greater Toronto Area, Hamilton, and Kitchener-Waterloo, making it an ideal locale for both living and doing business.

With its roots deeply intertwined with prosperous farming and manufacturing industries, New Tecumseth offers a rich economic landscape. The town's picturesque rural surroundings not only provide a tranquil backdrop for residents but also serve as a thriving hub for agricultural endeavors.

Over the past few years, New Tecumseth has experienced substantial growth, witnessing a remarkable 28% increase in population between the 2016 and 2021 Census periods. This growth trajectory is poised to continue, with the Town designated as a key growth area by the County of Simcoe. Projections indicate that our population could surpass 80,000 residents by 2051, underscoring the town's allure as a burgeoning community.



One of North America's fastest growing regions



Population growing at triple the rate of the provincial average



Minutes from Hwy 400 with easy connections to rail lines and border crossings

**Lennard:**

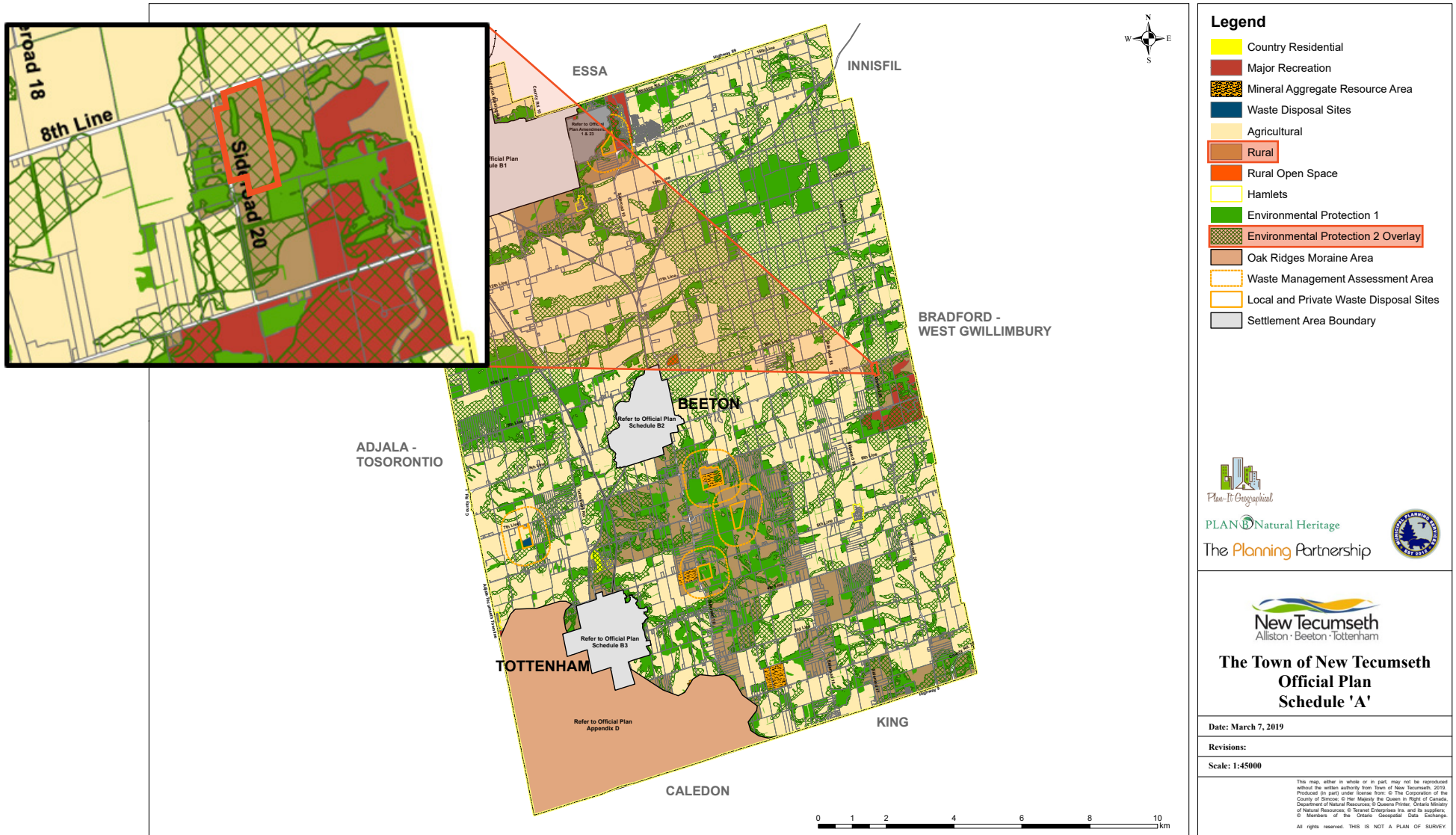
[lennard.com](http://lennard.com)



# 2881 20th Sideroad

New Tecumseth, Ontario

## Official Plan Land Use Map



**Legend**

- Country Residential
- Major Recreation
- Mineral Aggregate Resource Area
- Waste Disposal Sites
- Agricultural
- Rural
- Rural Open Space
- Hamlets
- Environmental Protection 1
- Environmental Protection 2 Overlay
- Oak Ridges Moraine Area
- Waste Management Assessment Area
- Local and Private Waste Disposal Sites
- Settlement Area Boundary

Plan-It Geographical  
 PLAN Natural Heritage  
 The Planning Partnership

**New Tecumseth**  
 Alliston · Beeton · Tottenham

**The Town of New Tecumseth**  
**Official Plan**  
**Schedule 'A'**

Date: March 7, 2019

Revisions:

Scale: 1:45000

This map, either in whole or in part, may not be reproduced without the written authority from Town of New Tecumseth, 2019. Produced (in part) under license from: © The Corporation of the County of Simcoe, © Her Majesty the Queen in Right of Canada, Department of Natural Resources © Queens Printer, Ontario Ministry of Natural Resources © Terrestrial Enterprises Inc. (not applicable), © Members of the Ontario Geospatial Data Exchange. All rights reserved. THIS IS NOT A PLAN OF SURVEY.





# 2881 20th Sideroad

New Tecumseth, Ontario

Survey



**Lennard:** Joseph Wise\*, Vice President | 416.649.5909 • jwise@lennard.com

\*Sales Representative

[lennard.com](http://lennard.com)





## Lennard:

Michael Zeldin\*, Associate Vice President  
416.649.5942  
[mzeldin@lennard.com](mailto:mzeldin@lennard.com)

200-55 University Avenue, Toronto  
416.649.5920  
[lennard.com](http://lennard.com)

\*Sales Representative  
Statements and information contained are based on the information furnished by principals and sources which we deem reliable but for which we can assume no responsibility. Lennard Commercial Realty, Brokerage.