

# 30 Delta Park Boulevard, Unit B

Functional warehouse space in Brampton

Jonathan Gorenstein\*, MBA, SIOR  
Partner  
905.917.2044  
[jonathan@lennard.com](mailto:jonathan@lennard.com)

For Lease: Industrial



Here is where  
your business  
will *grow*.

**Lennard:**

209 - 1 Yorkdale Road, North York  
905.752.2220 • [lennard.com](http://lennard.com)

\*Broker

# 30 Delta Park Boulevard, Unit B

Functional warehouse space in Brampton



Warehouse  
**26,437 SF**

Office  
**4,666 SF**

Total Area  
**31,103 SF**



Net Rent  
**\$16.95 PSF**

Additional Rent  
**\$3.75 (2024) T.M.I.**



Possession  
**September 1, 2024**



Clear Height  
**24'**



Shipping Doors  
**6 Truck Level**  
**1 Drive-In**



Zoning  
**M4 - 1557**



Highlights

- LED lighting for warehouse, exterior, office area and exit signage
- High shipping door ratio
- 6 Truck Level doors, 1 large Drive-In door
- Upgraded sprinkler system
- Direct Airport Road exposure
- Convenient access to Hwy 407 and CN Intermodal



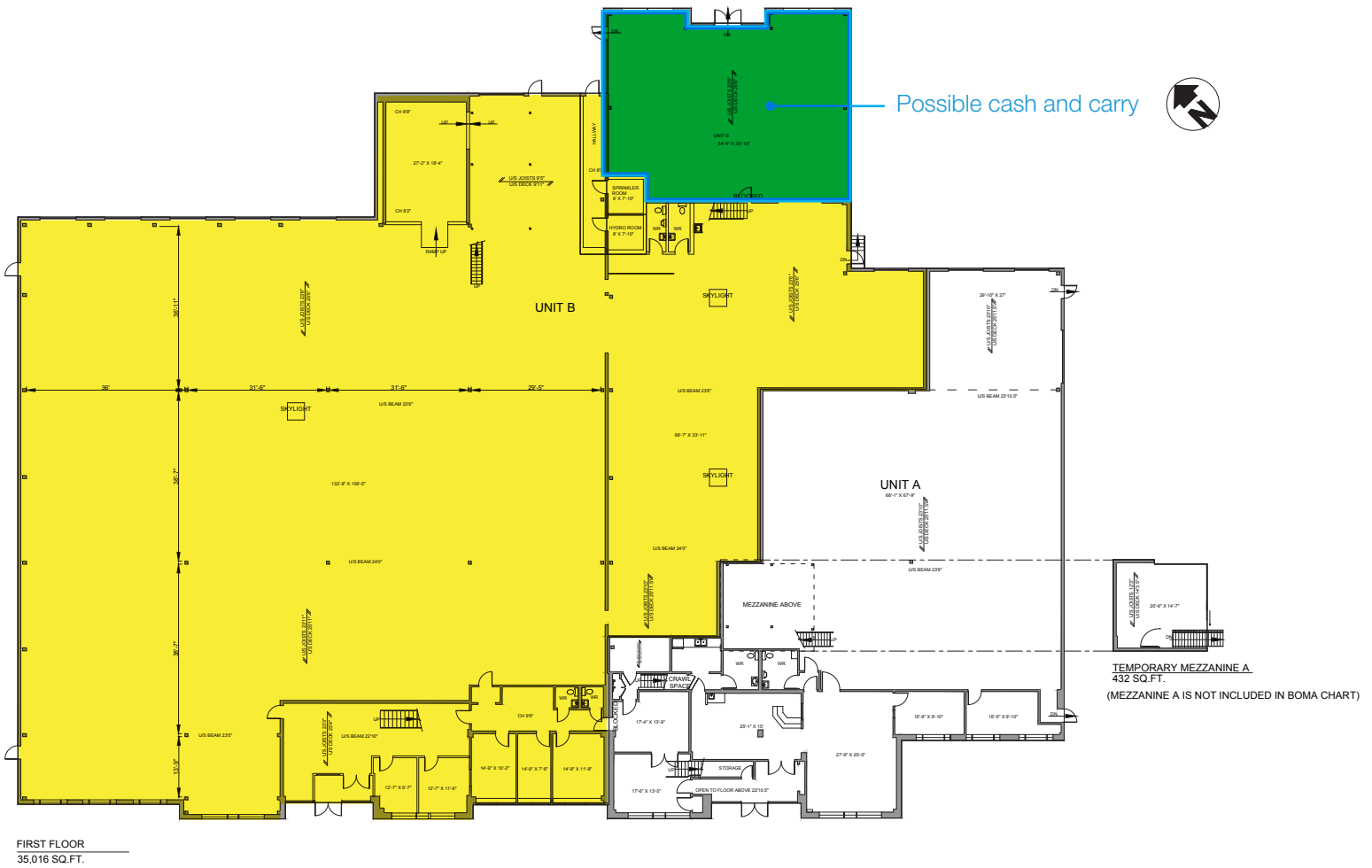
Statements and information contained are based on the information furnished by principals and sources which we deem reliable but for which we can assume no responsibility. Lennard Commercial Realty, Brokerage.

**Lennard:**

[lennard.com](http://lennard.com)

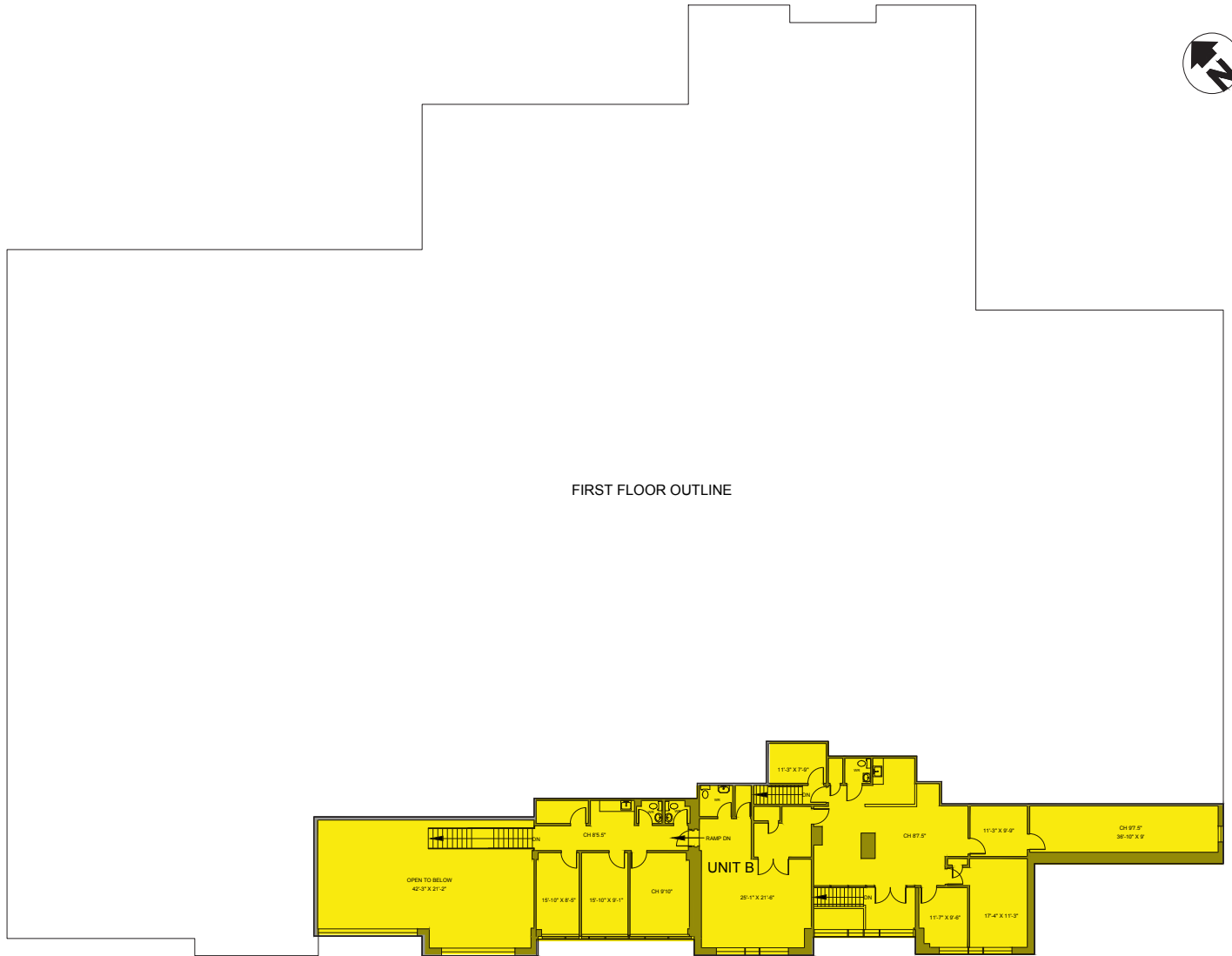
# 30 Delta Park Boulevard, Unit B

## Floor Plan - Main Floor



# 30 Delta Park Boulevard, Unit B

## Floor Plan - Second Floor



# Lennard:

Jonathan Gorenstein\*, MBA, SIOR  
Partner  
905.917.2044  
[jonathan@lennard.com](mailto:jonathan@lennard.com)

\*Broker

Statements and information contained are based on the information furnished by principals and sources which we deem reliable but for which we can assume no responsibility. Lennard Commercial Realty, Brokerage..