

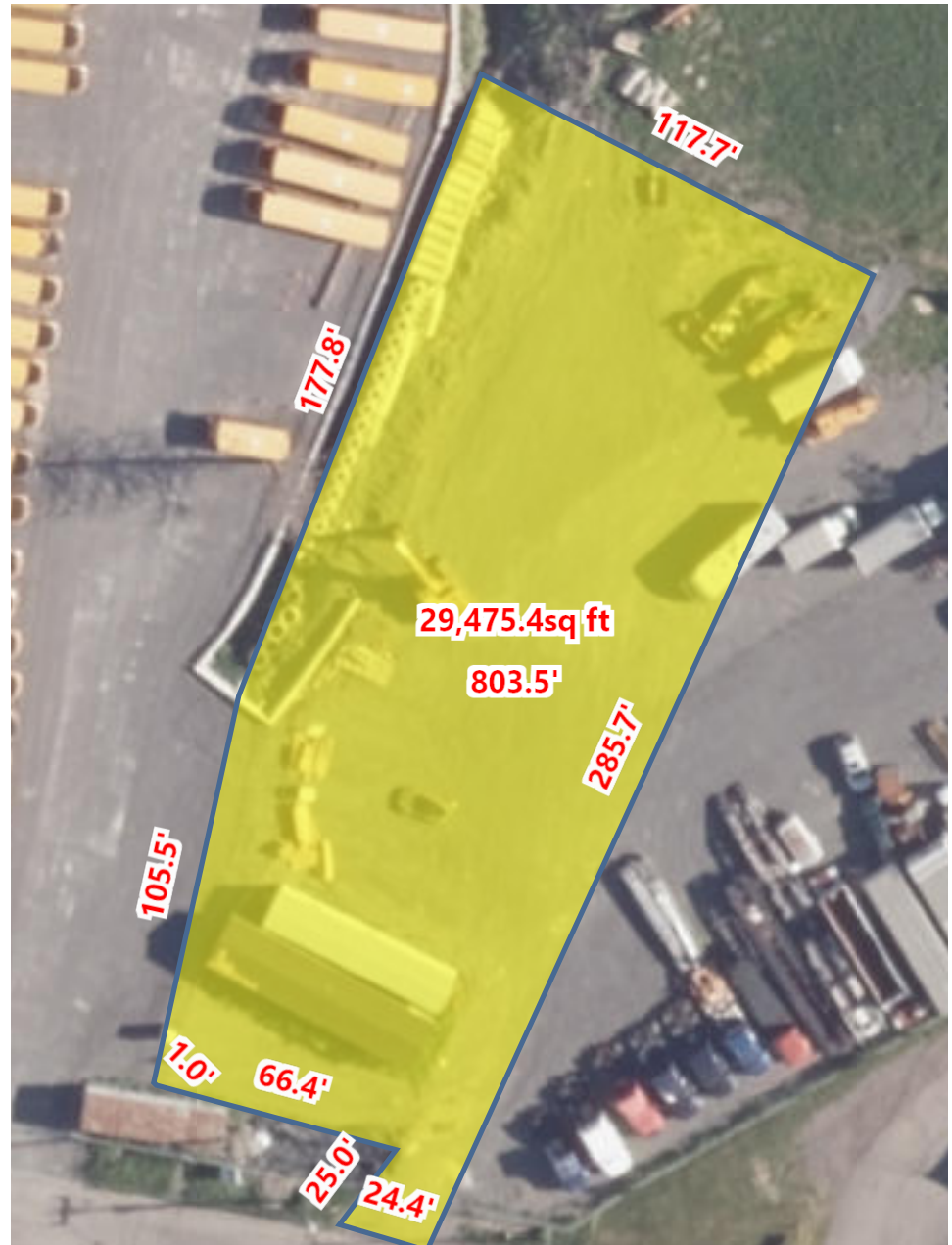
3165 Swansea Crescent

Located on Swansea Crescent close to Hawthorne Road and HWY 417

	Site Area ● Approx. 0.7 acres
	Zoning: ● IG3 – General Industrial
	Available: ● Q1 2025
	Price: ● \$6,900 Per Month (Gross Lease)
	Listing Agent: ● Nick Hannah* Vice President D. 613.963.2637 nhannah@lennard.com <small>*Sales Representative</small>

Building Highlights

- Rare opportunity to lease industrial land within the Greenbelt
- Fenced, lit, and secured yard
- Zoned General Industrial (IG3) to accommodate multiple uses including outdoor storage
- 0.7 acres minutes from multiple highway exits and Hunt Club Road
- Opportunity to expand lease up to 1.5 acres



Nick Hannah*, Vice President

613.963.2637

nhannah@lennard.com

Lennard:

420-333 Preston Street, Ottawa

613.963.2640

*Sales Representative

Statements and information contained are based on the information furnished by principals and sources which we deem reliable but for which we can assume no responsibility. Lennard Commercial Realty, Brokerage.