



For Lease: Retail

3192 Eglinton Avenue E

**Lennard:**

201-60 Columbia Way, Markham  
905.752.2220

[lennard.com](http://lennard.com)

# 3192 Eglinton Avenue E



Retail unit available for lease at the corner of Eglinton Avenue E and Markham Road.



Available Space  
**1,253.90 SF**



Net Rent  
**\$20.00 PSF**

Additional Rent  
**\$15.45 (2025)**



Availability  
**Immediate**



Listing Agents  
**Marty Atkins\*\***  
Vice President  
416.565.3455  
matkins@lennard.com

\*\*Broker

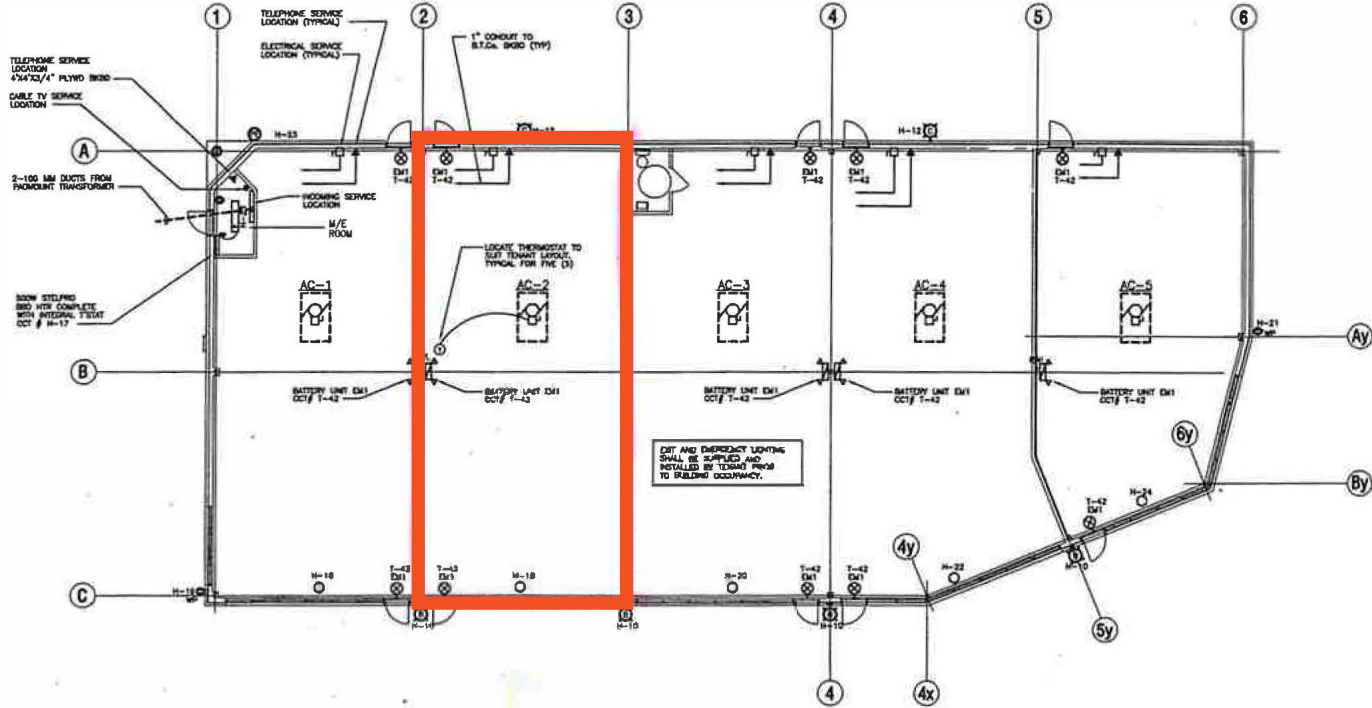
## Property Highlights

- Corner plaza location
- Busy intersection, high traffic area
- Bus stop at door
- Suitable for many uses
- Immediate possession

# 3192 Eglinton Avenue E



## Floor Plan



# 3192 Eglinton Avenue E

## Site Plan

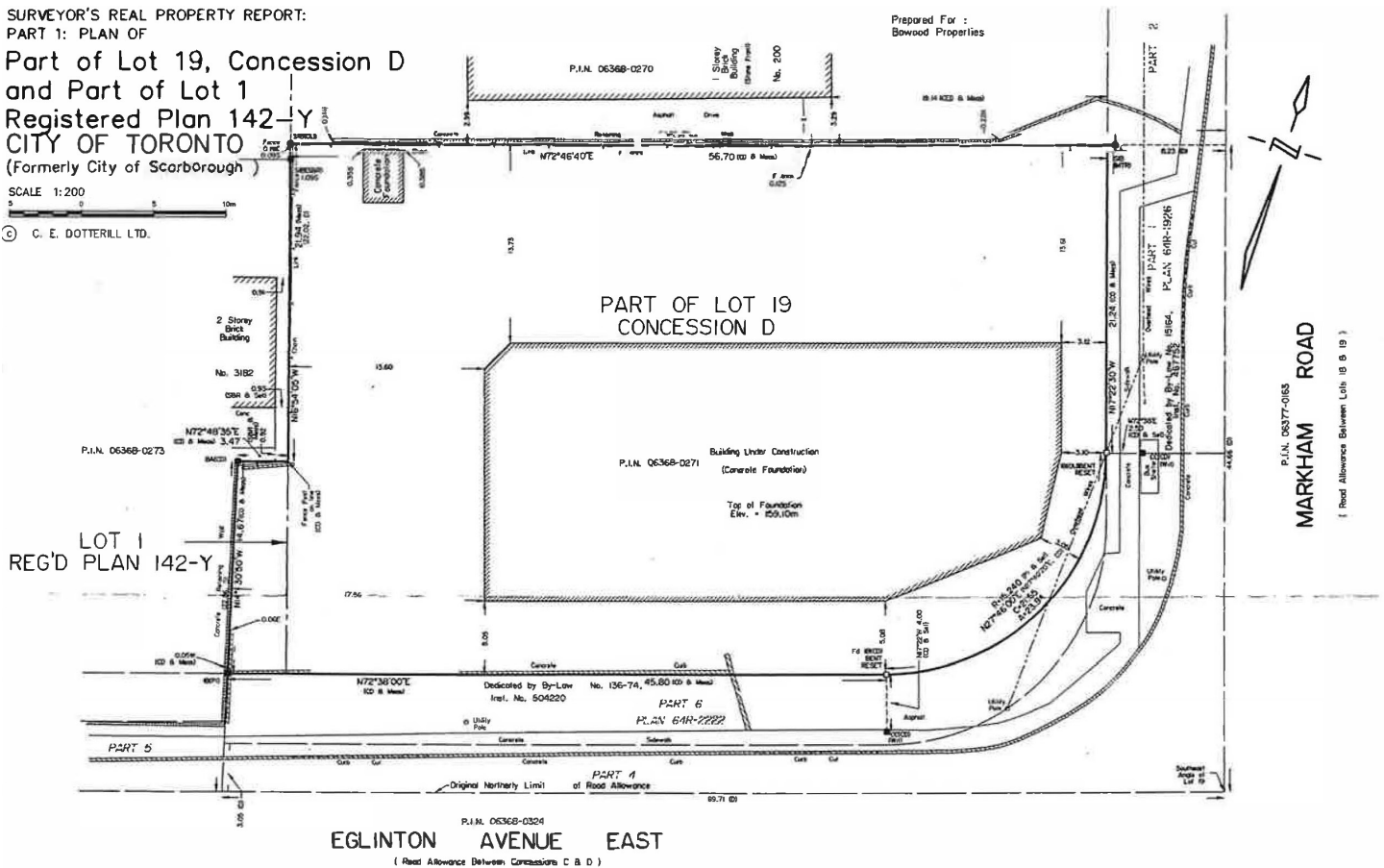
SURVEYOR'S REAL PROPERTY REPORT:  
PART 1: PLAN OF

Part of Lot 19, Concession D  
and Part of Lot 1  
Registered Plan 142-Y  
CITY OF TORONTO  
(Formerly City of Scarborough)

Prepared For:  
Bowwood Properties

SCALE 1:200

© C. E. DOTTERILL LTD.

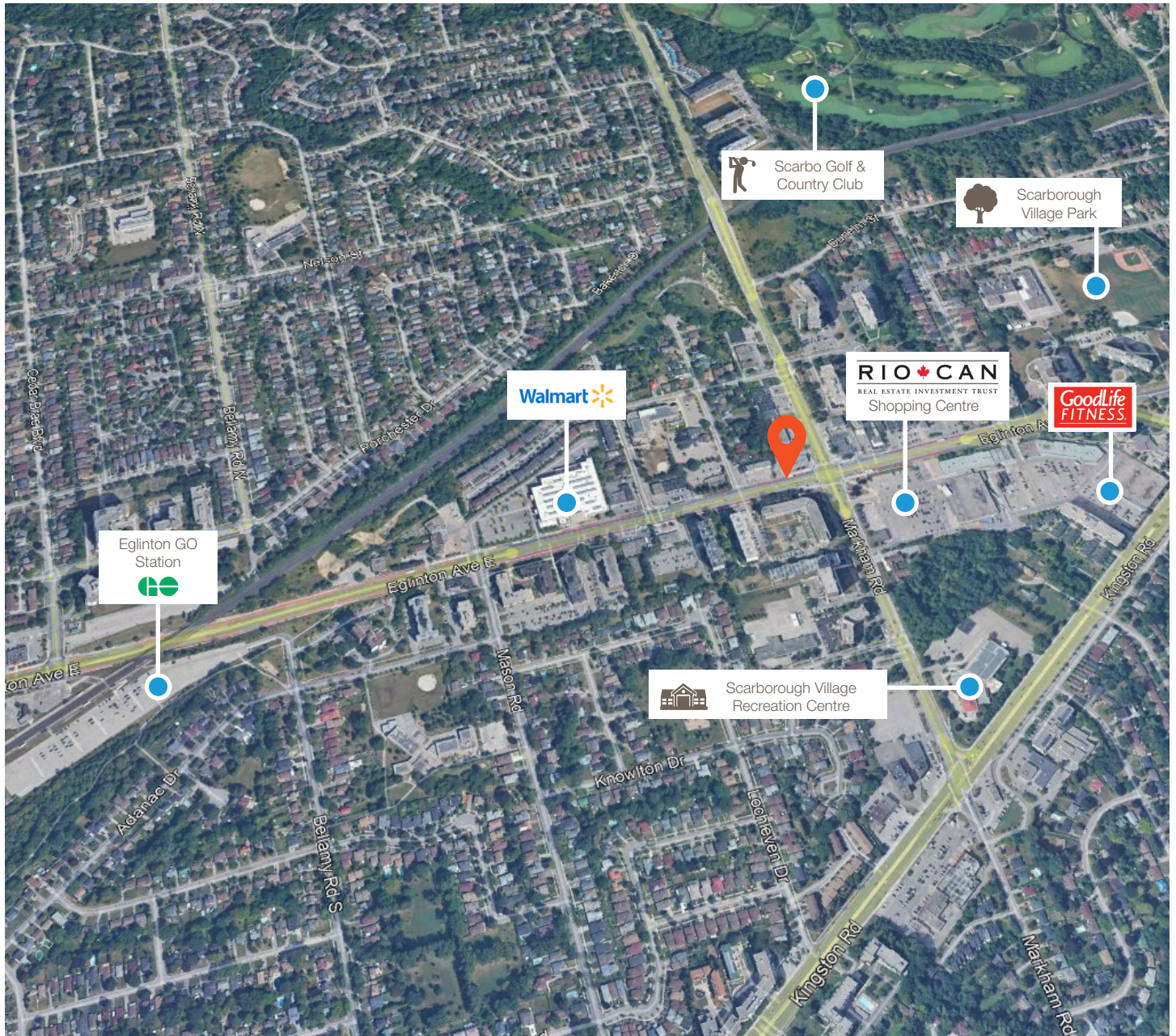




# 3192 Eglinton Avenue E



## Amenities Map



# Lennard:

Marty Atkins\*\*, Vice President  
416.565.3455  
[matkins@lennard.com](mailto:matkins@lennard.com)

201-60 Columbia Way, Markham  
905.752.2220  
[lennard.com](http://lennard.com)

\*Sales Representative \*\*Broker

Statements and information contained are based on the information furnished by principals and sources which we deem reliable but for which we can assume no responsibility. Lennard Commercial Realty, Brokerage.