



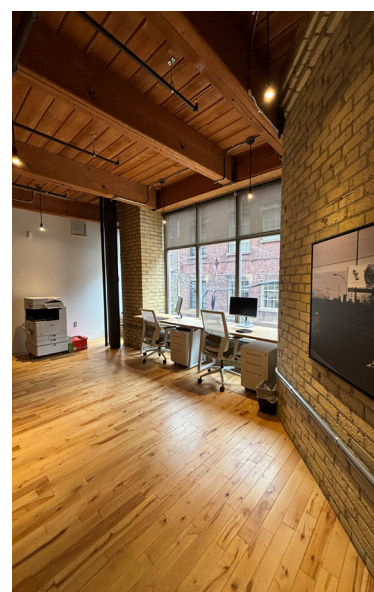
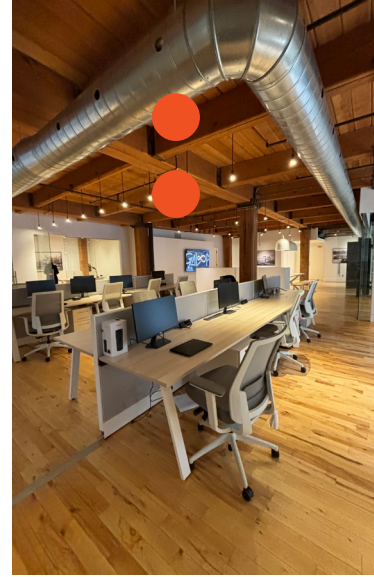
[Click For
Virtual
Tour](#)

For Sublease: Office

366 Adelaide Street W

Beautiful Brick and Beam Office Space
3,080 SF Fully Furnished Downtown Sublease

Lennard:

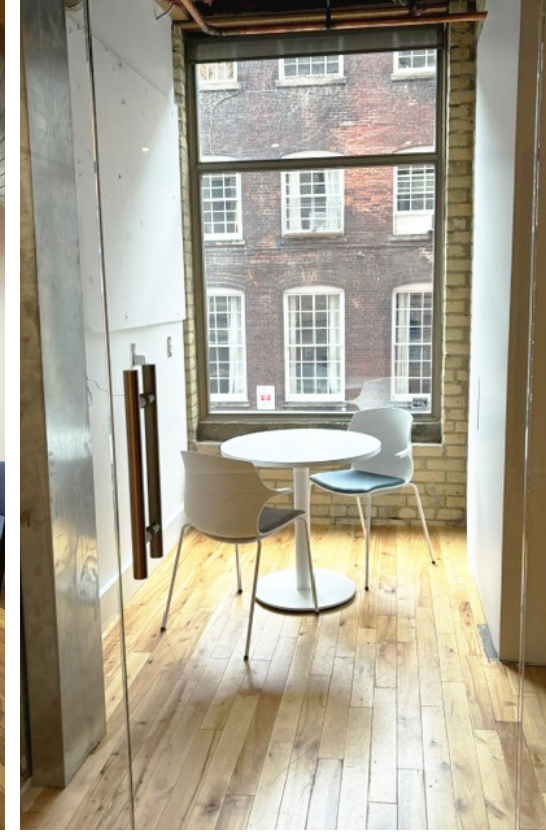


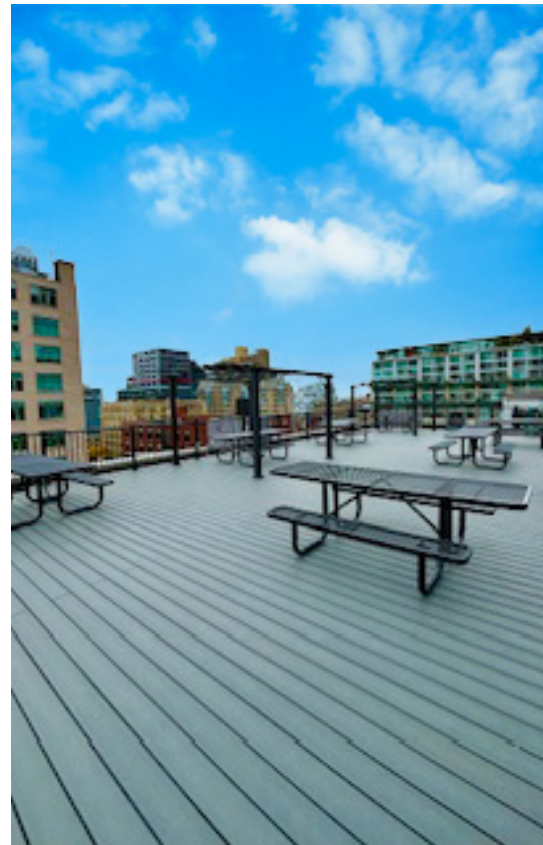
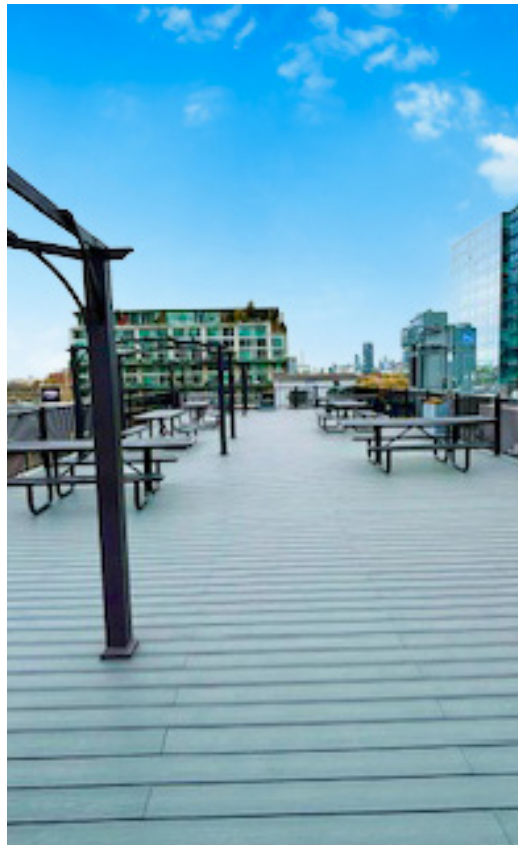
366 Adelaide Street W

Available Space	Suite 207
Size	3,080 SF
Term	December 30, 2027
Available	Immediate
Commission	\$2.00 PSF/Annum
Semi-Gross Rent	Call Listing Agent to Discuss

Property Highlights

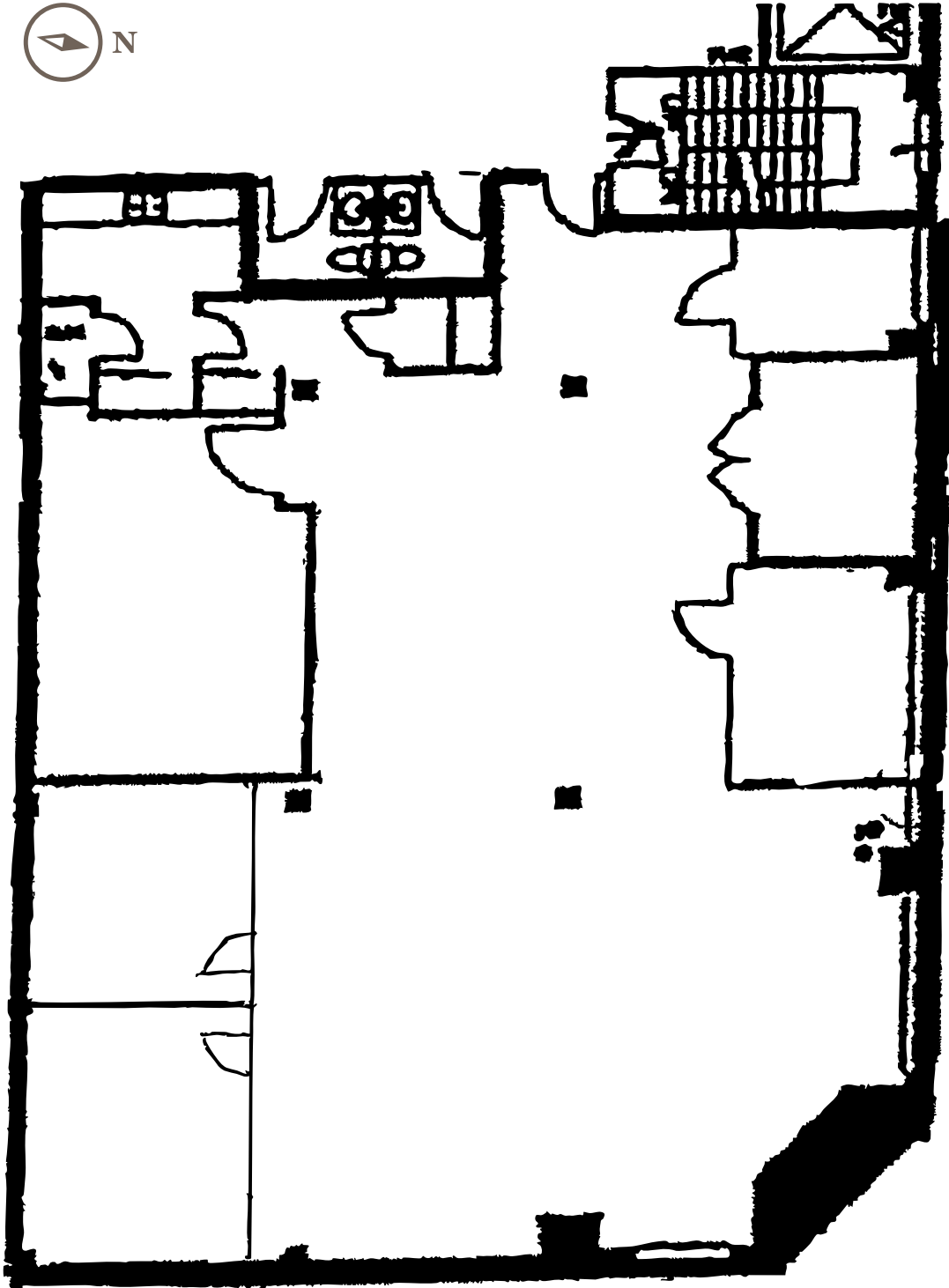
- Furnished, wired and ready for tenant occupancy
- Newly built with high-end finishes and high ceilings
- Built out with boardroom, 4 offices, meeting room, 18 workstations, collaboration space, and kitchen
- Large rooftop patio for tenant use – WIFI connected
- 2 unreserved parking spaces available (\$240 / stall / month)





366 Adelaide Street W

Suite 207 Floor Plan





366 Adelaide Street W

Suite 207: 3,080 SF



Cathy Strati*, Executive Vice President
416.649.5935
cstrati@lennard.com

Lennard:

200-55 University Avenue, Toronto
416.649.5920
lennard.com

*Sales Representative
Statements and information contained are based on the information furnished by principals and sources which we deem reliable but for which we can assume no responsibility. Lennard Commercial Realty, Brokerage 2022.