



Office Space for Lease

780 Echo Drive, Ottawa

Office space available for lease adjacent to Lansdowne Park

Lennard: Imagine the *Possibilities*.

lennard.com

780 Echo Drive

6,787 RSF of office space available



Available Space

Second Floor:
6,787 RSF



Availability

Immediate



Gross Rent

\$35.00 PSF
(2% escalation per annum)



Parking

\$100 + HST
per stall per month

Parking ratio 2/1000 SF
leased



Listing Agent

Paul Cook*

Partner

D. 613.963.2634
pcook@lennard.com

Brent Heeney

Sales Representative

D. 613.963.2631
bheeney@lennard.com

*Sales Representative

Property Highlights

- Full floor open concept office space
- Gated access and parking
- Common area cafe and showers
- Park like setting abutting the Rideau Canal
- Walking distance to Bank Street amenities and Lansdowne Park
- Old Ottawa South Fitness Centre just across the street

780 Echo Drive

Photos

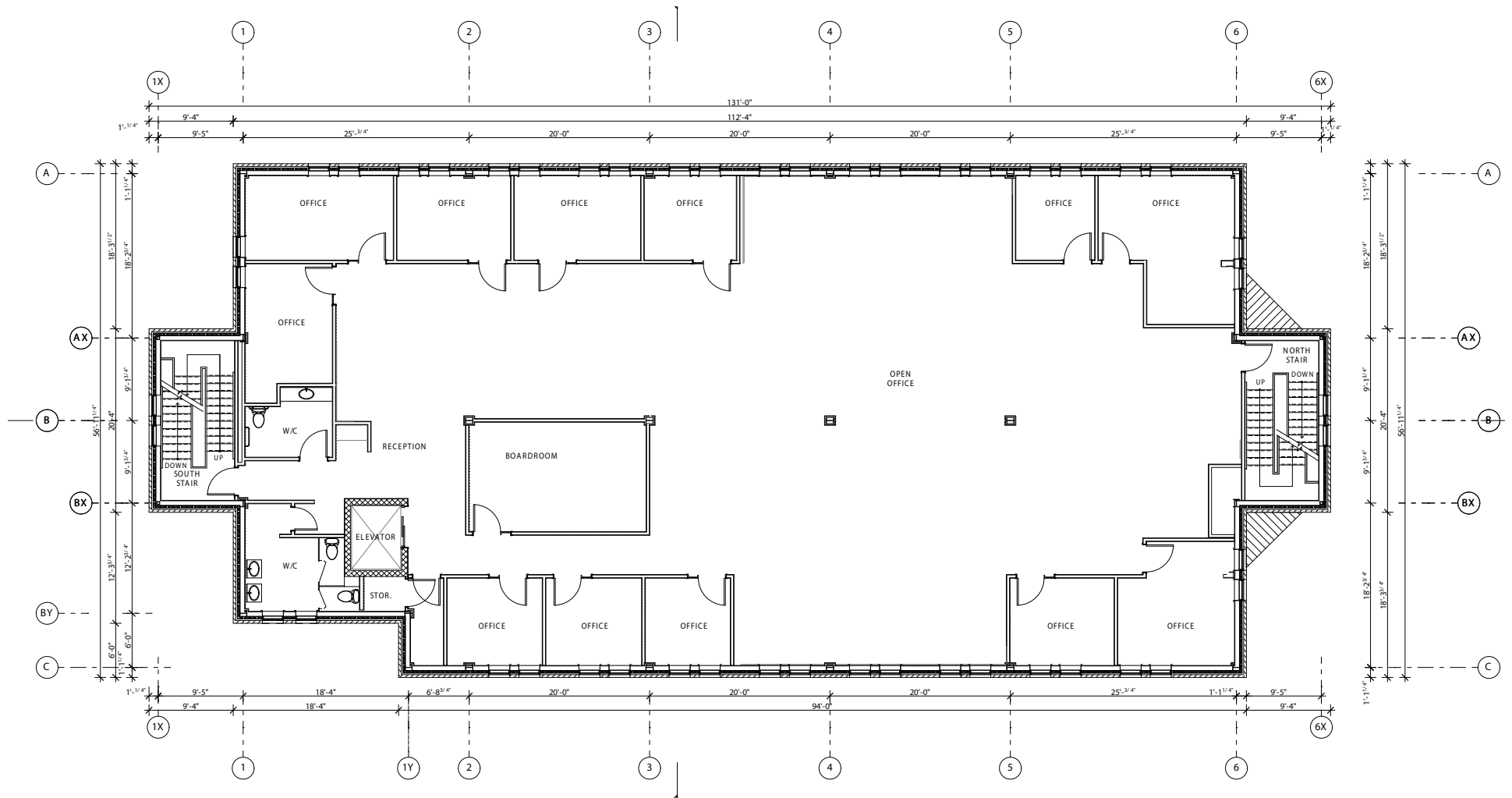


Lennard:

lennard.com

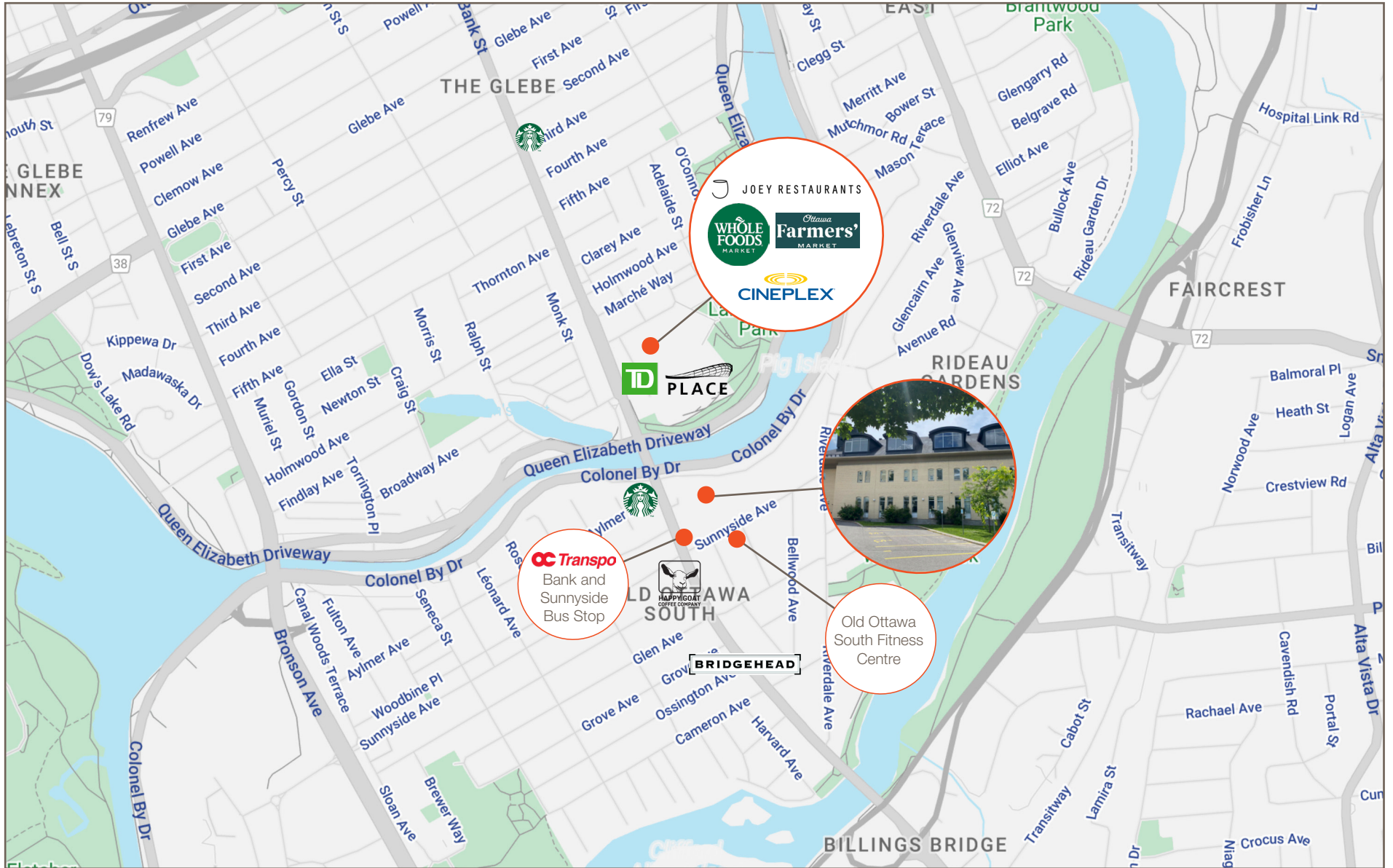
780 Echo Drive

Second Floor - Floor Plan



780 Echo Drive

Location Map



Lennard:

Lennard:

Paul Cook*, Partner

D. 613.963.2634

C. 613.808.9302

pcook@lennard.com

Brent Heeney, Sales Representative

D. 613.963.2631

bheeney@lennard.com

333 Preston Street, Suite 420

Ottawa, ON K1S 5N4

613.963.2640

lennard.com

*Sales Representative

Statements and information contained are based on the information furnished by principals and sources which we deem reliable but for which we can assume no responsibility. Lennard Commercial Realty, Brokerage 2024.