



For Lease: Office

# 885 Don Mills Road

Modern Office Space For Lease in the Heart of Don Mills

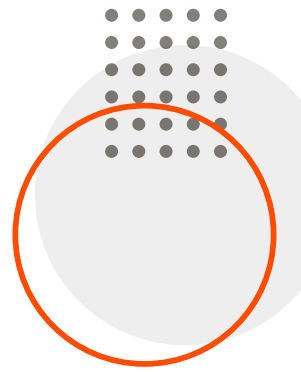
**Lennard:**

200-55 University Avenue, Toronto  
416.649.5920

[lennard.com](http://lennard.com)

# 885 Don Mills Road

Spacious modern offices available for lease at Eglinton Avenue E and Don Mills Road



Available Suites

Suite 110: 1,377 SF

Suite 200: 1,078 SF

Suite 202: 5,197 SF (Available April 1, 2025)

Suite 206-207: 2,786 SF

Suite 208: 2,029 SF (Available April 1, 2025)

Suite 224: 964 SF



Asking Net Rent

\$15.00 PSF

Property Taxes

\$13.75 PSF (2024)



Parking

Free surface parking at a ratio of 3 stalls per 1,000 SF



Possession

Immediate

Term

Up to 5 Years



Listing Agents

**Will Angus\*\***

Vice President

416.451.9048

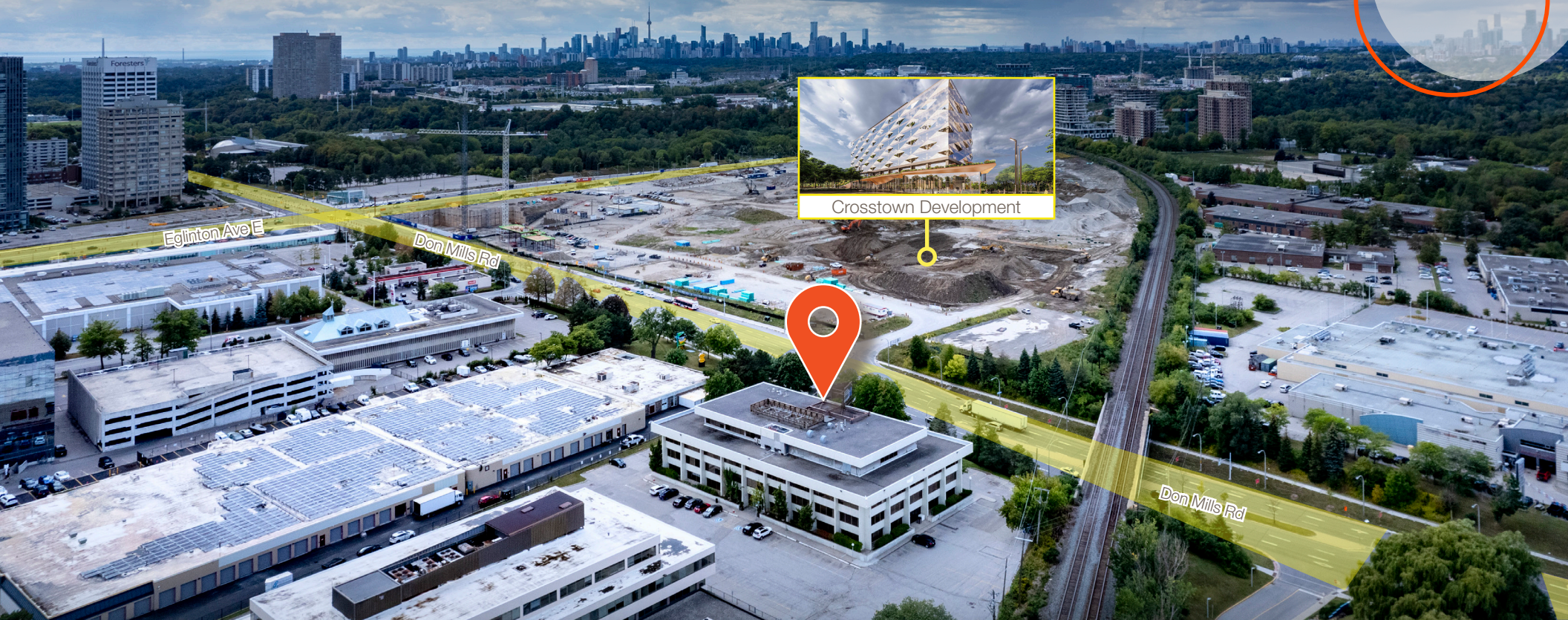
[will.angus@lennard.com](mailto:will.angus@lennard.com)

\*Sales Representative \*\*Broker

## Property Highlights

- Bus stops and future Eglinton LRT only steps away
- 5 minute drive to numerous restaurants
- Free surface parking available
- Easy access to DVP, 404, 401 & Gardiner

# 885 Don Mills Road



## Quality Landlord

The Building benefits from a dedicated on site property manager which allows the tenant to get faster responses to any questions or concerns they may have.

## Access to Natural Light

Access to natural light increases productivity and improves the well-being of your employees. The modern concept glass offices at 885 Don Mills Road will contribute to a bright, lively, and productive office environment.

## Amenities in the Area

Proximity to food options can help improve productivity and cut down on wasted transit time during the day. 885 Don Mills offers a variety of options including the Canadian Superstore just down the street and the Shops at Don Mills up at Lawrence where there is no shortage of both quick serve and health-conscious choices.

## Subway & Transit Access

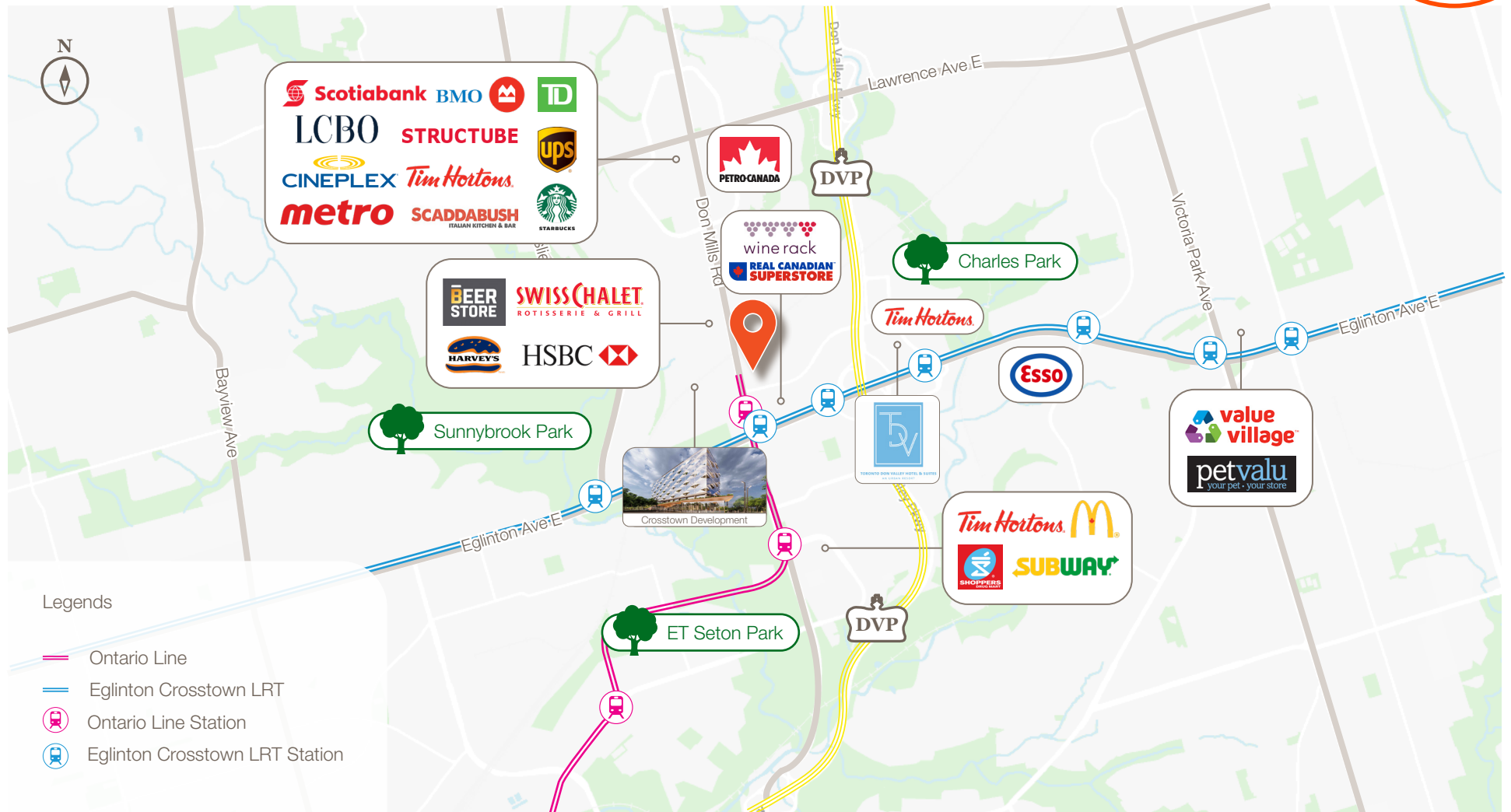
Within walking distance from the Property are numerous bus stops that lead to Don Mills Subway Station to the North and Pape Subway Station to the South. Don Mills & Eglinton will also be home to a future Eglinton LRT station which will provide convenient East/West service.

**Lennard:**

[lennard.com](http://lennard.com)

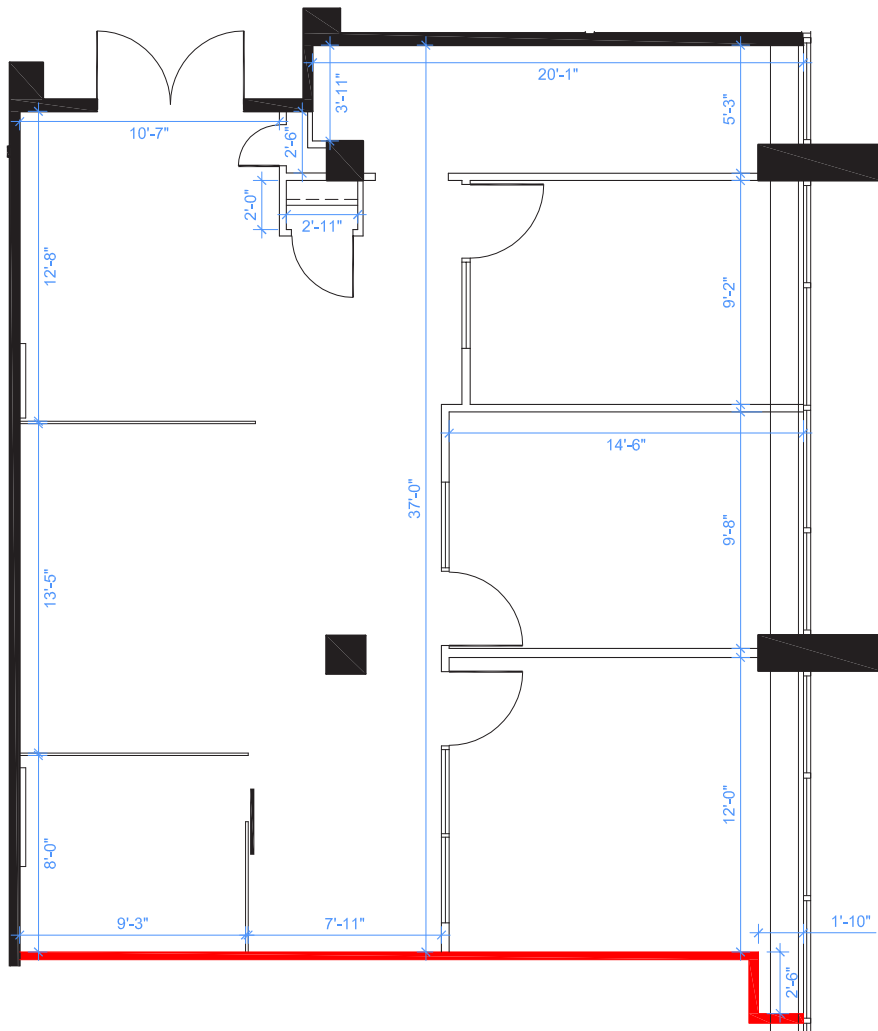
# 885 Don Mills Road

## Amenities Map

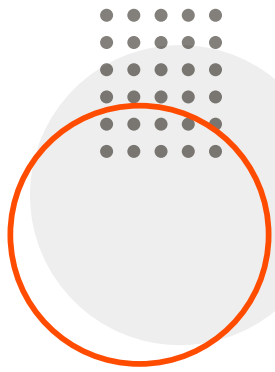
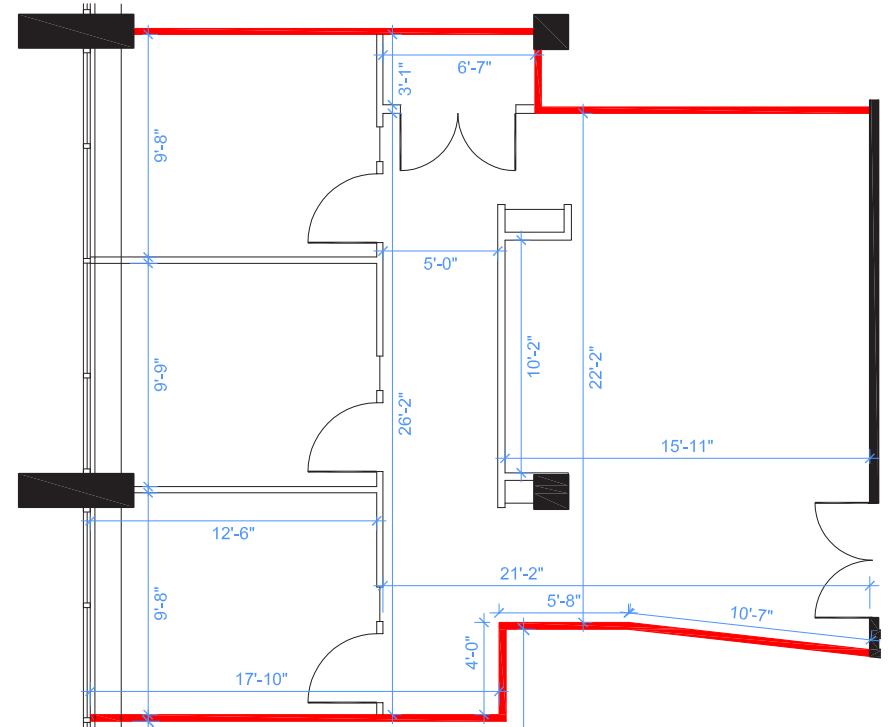


# 885 Don Mills Road

**Suite 110**  
1,377 SF

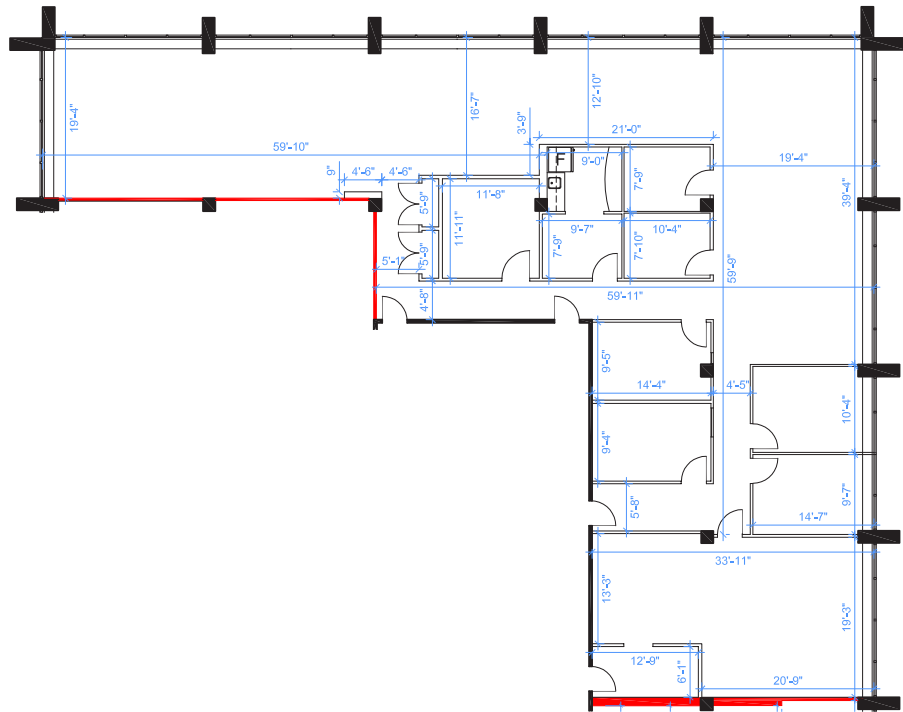


**Suite 200**  
1,078 SF

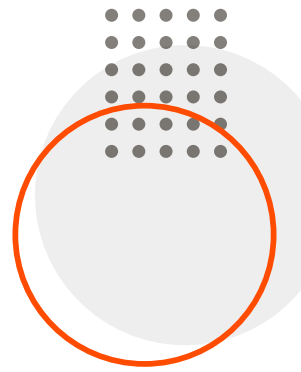
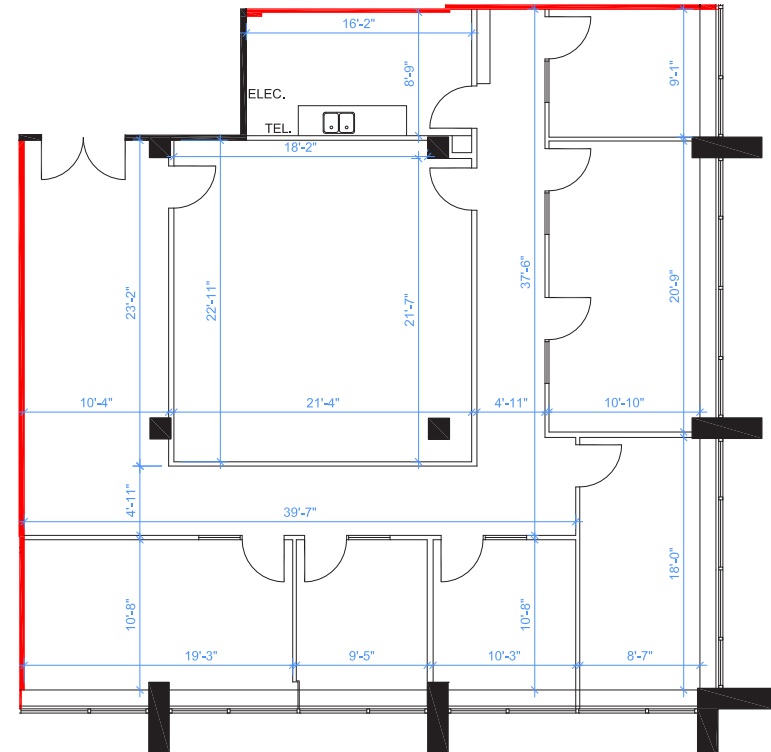


# 885 Don Mills Road

**Suite 202**  
5,197 SF

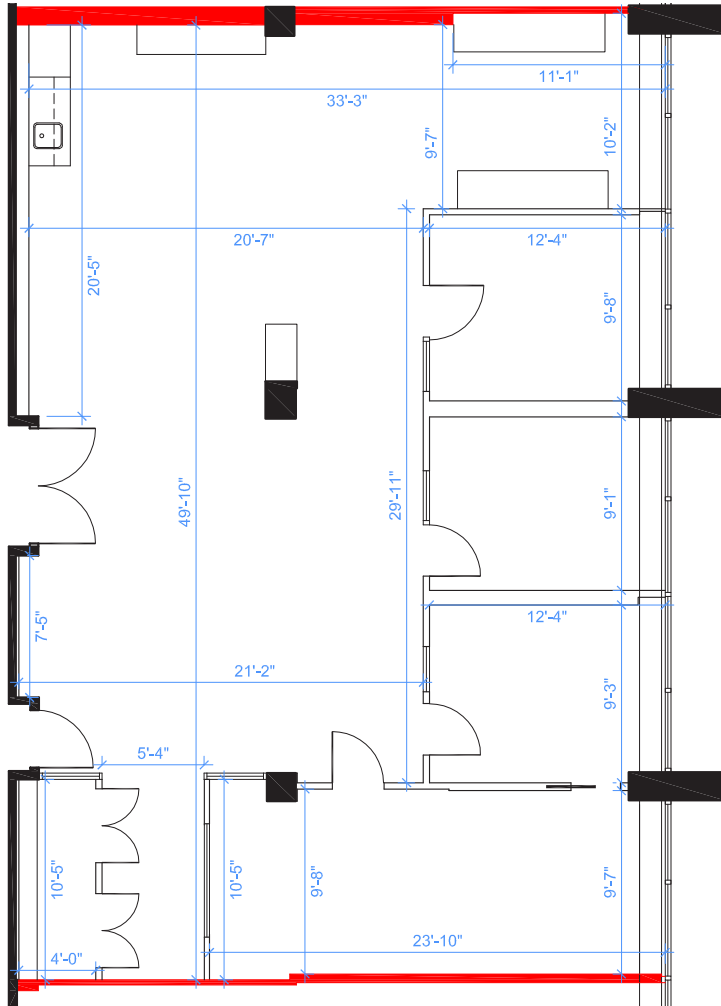


**Suite 206-207**  
2,786 SF

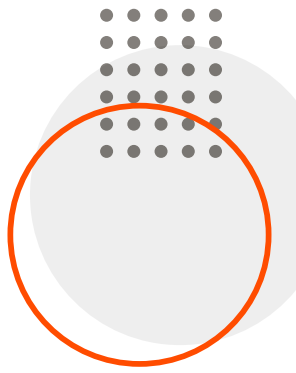
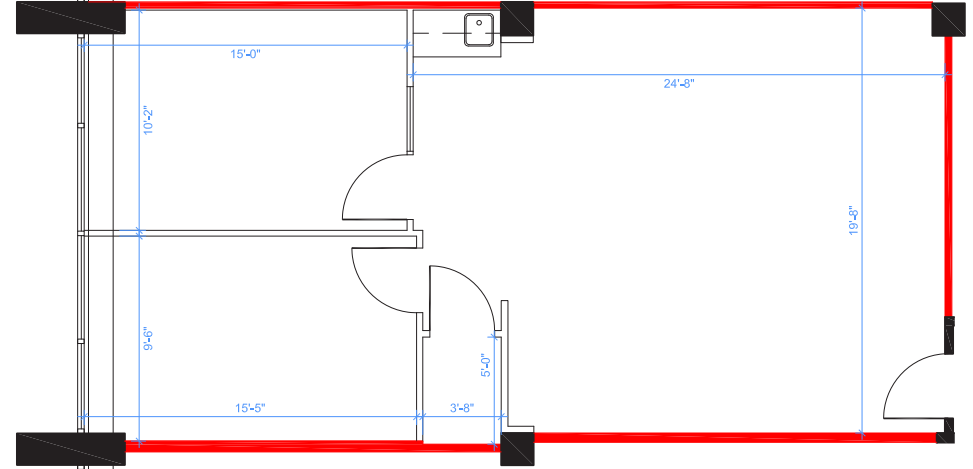


# 885 Don Mills Road

**Suite 208**  
2,029 SF



**Suite 224**  
964 SF



# 885 Don Mills Road







For Lease: Office

# 885 Don Mills Road

## Lennard:

Will Angus\*\*, Vice President  
416.451.9048  
[will.angus@lennard.com](mailto:will.angus@lennard.com)

200-55 University Avenue, Toronto  
416.649.5920  
[lennard.com](http://lennard.com)

\*Sales Representative \*\*Broker  
Statements and information contained are based on the information furnished by principals and sources which we deem reliable but for which we can assume no responsibility. Lennard Commercial Realty, Brokerage.