



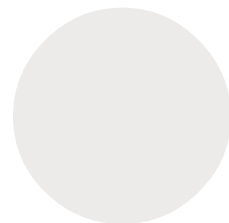
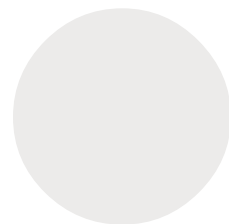
For Sublease: Office

90 Eglinton Avenue E

Excellent Opportunity in the heart of the bustling
Yonge and Eglinton neighbourhood

Lennard:

lennard.com



90 Eglinton Avenue E

4,000 SF office suite available for sublease in Midtown Toronto near the corner of Yonge Street and Eglinton Avenue E.



Available Space

601: 4,152 SF



Net Rent

Please Contact Listing Agent for Details

Additional Rent

\$23.87 PSF



Availability

Flexible / TBD

Term

November 30, 2027



Listing Agent

Joseph Wise*

Senior Vice President

416.649.5909

jwise@lennard.com

*Sales Representative

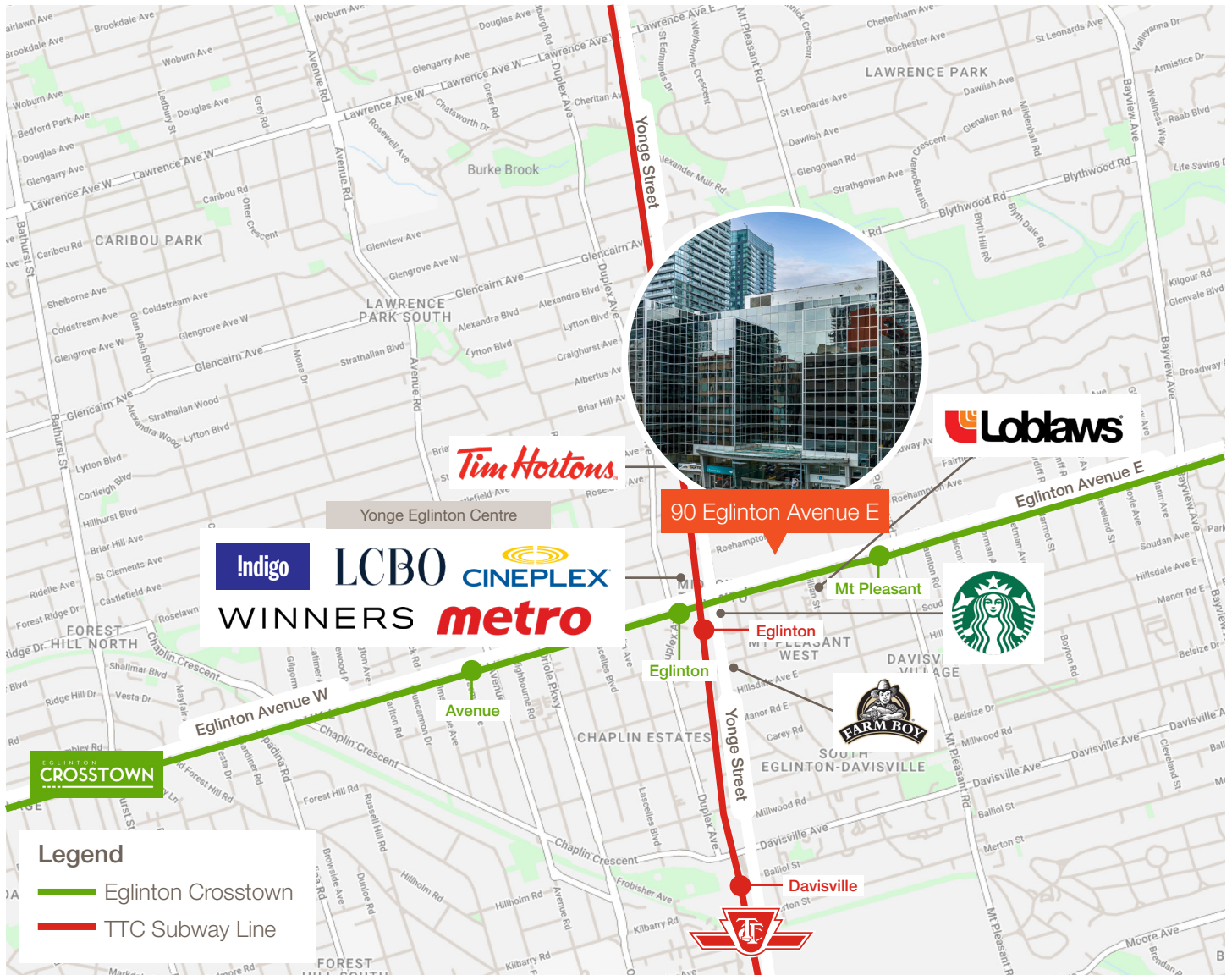


Property Highlights

- South facing with lots of windows and natural light; mix of private offices and open space with boardroom and kitchen
- Furniture potentially available
- 2 minute walk to subway at Eglinton Station; Eglinton Crosstown coming soon
- Ground floor retail amenities for employees' benefit
- BOMA Best Certified Silver building
- Underground parking
- Barrier free access
- 24/7 security on-site
- First class ownership and property management

90 Eglinton Avenue E

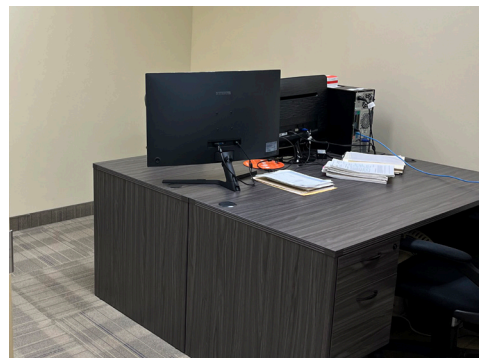
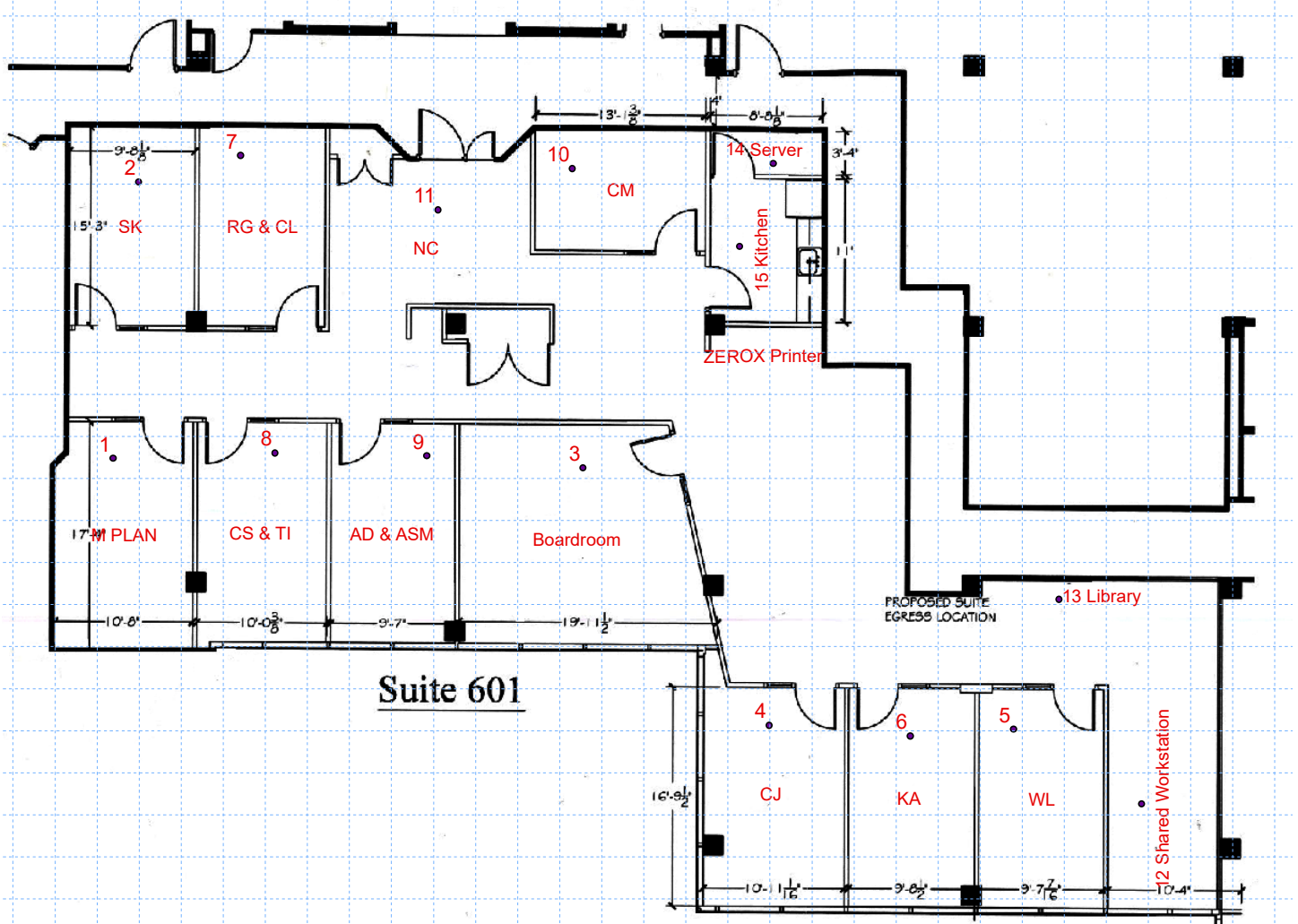
Property Map



90 Eglinton Avenue E



Floor Plan: Suite 601 - 4,152 SF



90 Eglinton Avenue E

